

Nozzle for INERGEN Marine systems

General

Nozzle for use in INERGEN Marine systems.

Nozzle material meet the requirements in IMO regulations for used in marine fire extinguishing systems and are MED approved.

The nozzle orifice must be calculated specifically for each installation.

Each nozzle must be calibrated and marked individually and permanently with the orifice diameter.

When ordering calibrated nozzles "-8" is added to the part number.


IMT-calculation or info on the needed orifice diameter must follow orders for -8 item nos.



Specifications

Max work pressure: 300 bar

Temperature: -60 to +300°C

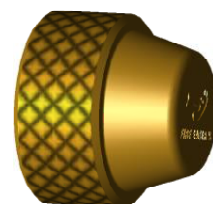
Marking: Designation (size -Thread),  0575,

Batch number, orifice diameter, Fire Eater logo,

Inter nozzle distance: max. 8 m.

Thread: ISO7/1 or NPT (ANSI/ASME B1)

Material: CuZn39Pb3 or AISI 316 (see table for item numbers)



Types

Type (pipe size)	Part number				Maximum orifice size		Dimensions						Mass
	Brass		AISI316		Area	Ø	L	T	Do	D1	Ht	Hb	
	ISO7/1	NPT	ISO7/1	NPT	mm²	mm	mm	Thread	mm	mm	mm	mm	kg
1/2" (DN15) Orifice ø1-3 mm	210502	210522	-	-	7.1	3.0	60	ISO7/1 or NPT	ø32	ø27	26.5	15	0.18
1/2" (DN15)	210504	210524	210404	210424	180	15	-	-	ø32	ø27	26.5	15	0.11
3/4" (DN 20)	210506	210526	210406	210426	314	20	-	-	ø38	ø34	28.5	15	0.15
1" (DN 25)	210508	210528	210408	210428	500	25	-	-	ø48	ø42	32.5	19	0.28
5/4" (DN32)	210510	210530	210410	210430	800	32	-	-	ø60	ø52	42	23	0.53

Document:

210xxx IN Nozzle Brass BSP & NPT

Product:

Mech Components

Id: IO

Rev:2015-02-18

Text



FIRE EATER ½

Vølundsvej 17
DK- 3400 Hillerød
Tel +45 7022 2769
Fax +45 7023 2769

Operating

The nozzle is an open nozzle and there are no requirements.

Maintenance

Clean at regular intervals.

Avoid getting dirt inside the pipe system.

After discharge of Inergen, the filter must be cleaned.

Routine testing

No requirements.

Calibration

The nozzle must be calibrated individually with the correct diameter according to IMT-calculation.

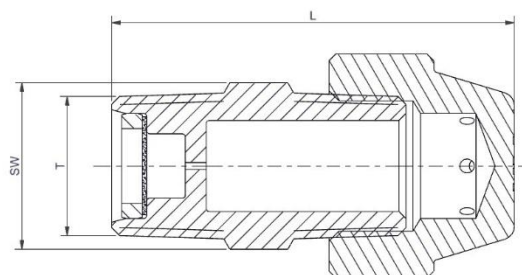
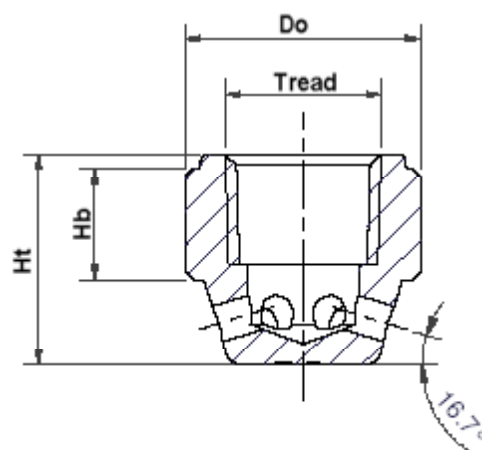
The calibration can be made by using a drill to obtain the correct diameter.

After calibration the diameter of the orifice must be stamped into the top of the nozzle.

If an orifice of less than Ø3.0 mm is used, a filter must be fitted before the orifice (in accordance with EN12094-7).

Nozzle w. filter and orifice is supplied in item 210502-8 or 210522-8.

Filter: 600my x 0.25mm thread and 50% unrestricted area.

**Installation**

The nozzle is screwed on to the pipe system either by hand or a spanner, tightening force app. 30Nm

Nozzle with filter is screwed on with a spanner, 21 mm (SW on drawing)

Document:

210xxx IN Nozzle Brass BSP & NPT

Product:

Mech Components

Id: IO

Rev:2015-02-18

Text

FIRE EATER 1/2

Vølundsvej 17
DK- 3400 Hillerød
Tel +45 7022 2769
Fax +45 7023 2769

1	Text
2	
3	
4	
5	
6	
7	
8	
9	