

APTB tool 0-100**Item numbers covered by this datasheet**

305148 APTB tool 0-100

Related product305147 APTB CO₂ adapter**General**

The APTB (Activation Pressure Test & Bleed) tool is used to measure activation pressure in the range 0-100 bar.

The tool is designed to be used with standard 16grams CO₂ cartridges (item no. 305250 or alternative) (threaded or non-threaded), using the specific sleeve or can be connected directly to a CO₂ cylinder with the CO₂ adapter kit.

Specifications

Max temperature in use with CO₂ cartridge: 49°C

Materials:

Tool body: Brass, aluminium, steel (manometer body)
 Union handle: Aluminium, steel
 Hose: Polymer

Pressure

Work: Cartridge pressure at 20°C: 59 bar
 Proof (burst): Burst disc rated for 150 bar

Thread connections:

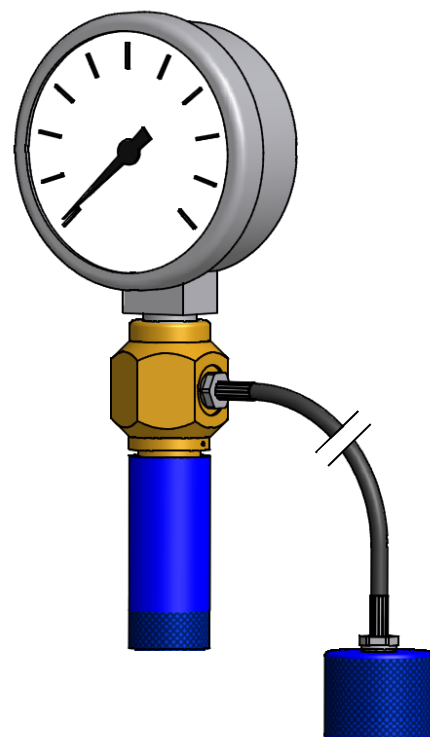
Handle to test port: ISO 228/1 G 3/8" w 60° seat

Hose bend radius: 50mm

Hose length: 1000mm

Dimensions: See drawings next page

Weight: 1.4 kg

**Important**

One CO₂ cartridge can be used for testing of approx. 5 pcs. of SV22 and 10m of tubing (@20°C and 35bar opening pressure). At ambient temperature (20°C) a maximum volume of 0.228 L can be tested. Volume of a SV22 is app 20cm³ each.

For systems with a larger volume (more SV22/longer pipe system), a CO₂ pressure cylinder adapter kit (item no. 305147) is available.

Markings

Fire Eater logo, "APTB Tool" on the cartridge sleeve.

On the pressure gauge a Fire Eater logo and serial number is located on the back/side.

Document: 305148 APTB tool

Text

Category:

Tools & services

Id: MK

Rev:2018.08.09

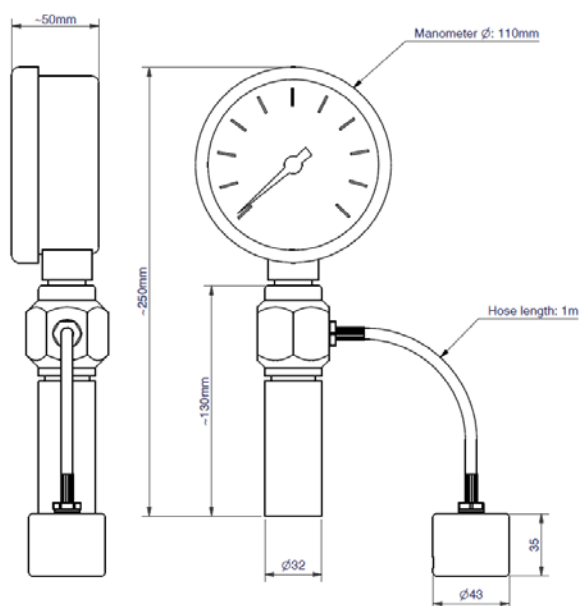
**FIRE EATER**

Vølundsvej 17
 DK- 3400 Hillerød
 Tel +45 7022 2769
 Fax +45 7023 2769

1
2
3
4
5
6
7
8
9

Certificate

The APTB tool is supplied with a certificate of calibration for the manometer.

**Operating****Testing of SV opening pressure:**

1. Locate the SV test port for the zone to be tested.
Remove the protection cap from the SV Test port's APTB connection.
2. Check that o-ring #17 is in place
Connect the APTB tool to the SV test port by screwing the APTB union handle (14) tightly onto the SV test port's APTB connection
3. Install a CO₂ cartridge in the tool if there is no CO₂ cartridge present in the tool or it is empty, by completely undoing the cartridge sleeve (9) and inserting a CO₂ cartridge. Screw the sleeve until fully tight - this will puncture the cartridge and seal it.
4. Ensure that all selector valves are closed.
5. Slowly increase the pressure by unscrewing the APTB tool sleeve (9) until the pressure rises to 35bar, and shut the APTB tool by screwing the sleeve in.
(The test is conclusive if the valve opens within 35 bar)
6. Bleed the pressure by unscrewing the APTB union handle (14) a few turns until the gas starts bleeding and leave it until all pressure is out
7. Reset the SV valve using the reset tool, item no. 305149.

Document: 305148 APTB tool

Text

Category:

Tools & services

Id: MK

Rev:2018.08.09



Vølundsvej 17
DK- 3400 Hillerød
Tel +45 7022 2769
Fax +45 7023 2769

Bleeding of SV pressure line after activation:

1. Locate the SV test port for the zone to be bled.
Remove the protection cap from the SV test port's APTB connection.
2. Connect the APTB tool to the SV test port by screwing the APTB union handle (14) onto the SV test port's APTB connection until the gas starts bleeding and leave it until all pressure is out
3. Reset the SV valve using the reset tool, item no. 305149.

Maintenance


Manometer should be calibrated as to the relevant authority's requirements.

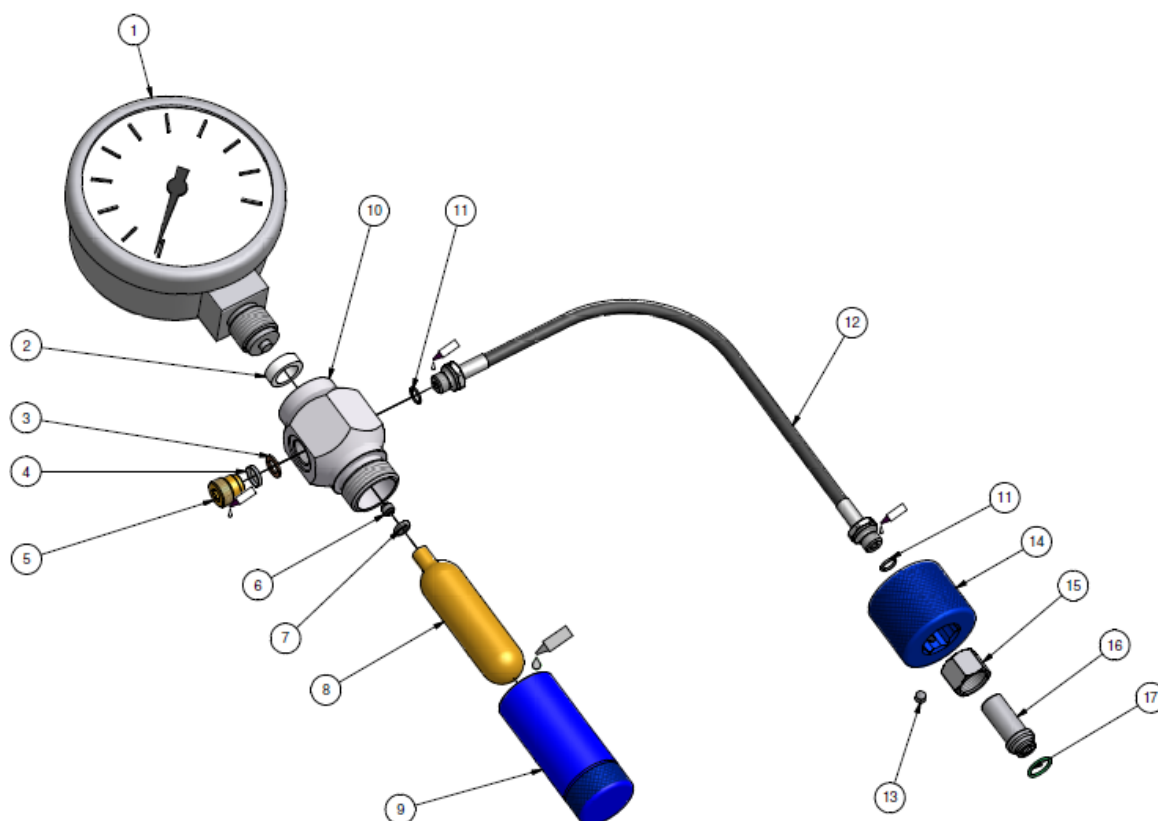
O-rings (7 and 17) are to be replaced when worn.

CO₂ cartridges are consumables and are not refillable.

The manometer PE gasket (2) should be replaced every 6 months or when a loss in sealing efficiency is noticed.

If the puncture tip (6) gets worn it can be replaced by unscrewing it with a hex key through the manometer connection. The manometer PE gasket (2) must be replaced before fitting the manometer back on (do NOT rotate the manometer body. Use a 22mm flat wrench on the square extension above the thread, rotate between 1/2 and 3/2 turn).

Document: 305148 APTB tool		1	Text
Category: Tools & services		2	
		3	
Id: MK		4	
Rev:2018.08.09		5	
 FIRE EATER 1/2		6	
		7	
		8	
		9	
Vølundsvej 17 DK- 3400 Hillerød Tel +45 7022 2769 Fax +45 7023 2769			

Exploded view

Pos.	Item	Description	Material
1	212156	Manometer Ø100 100bar acc 1	
2	305262	Manometer PE gasket	UHMW PE
3	305098	Copper washer Ø12xØ7	Copper
4	305515	Burst disc 150 bar	Nickel
5	305226	SM22 Burst disc bolt	Brass
6	305253	SM APTB Puncture tip	ARNE Steel
7	2043242	O-ring 4.3x2.4	PUR
8	305250	Cartridge CO2 16g	Steel
9	305252	SM APTB Cartridge sleeve	Aluminium
10	305251	SM APTB Body	Brass
11	212551	O-ring 8x1.0	EPDM
12	305257	SM APTB Hose 1,000mm	Polymer
13	212221	Setscrew M5x6	SS
14	305254	SM APTB Union handle	Aluminium
15	305255	SM APTB 3/8" Nut	Steel
16	305256	SM APTB Nippel 1/8"	SS
17	2112132	O-ring 11.18x1.27	PUR

Document: 305148 APTB tool

Text

Category:

Tools & services

Id: MK

Rev:2018.08.09



Vølundsvej 17
DK- 3400 Hillerød
Tel +45 7022 2769
Fax +45 7023 2769