

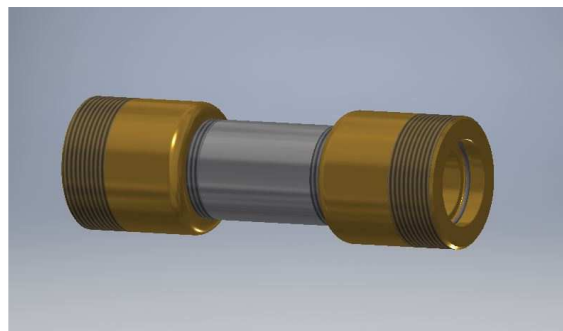
SV22 Pipe M40-M40 Male

Item numbers covered by this datasheet

305783 SV22 Pipe M40-M40 Male

General

The SV22 Pipe extension is used to switch thread direction (Male to Male). It can be used with the non-return valve 305785-44.



Specifications

Temperature	-60°C to + 80°C
Materials	Stainless Steel, Brass, Pu 1.4404/aisi316, CW614n
Dimensions	
Diameter	ø32 mm
L _{it}	132 mm
Weight	0.65 kg
Pressure [MPa]	
Work	40 MPa (400 bar)
Proof (burst)	>145 MPa (1450 bar)
Thread connections	
Male-Male	M40
O-ring	2260152 (26.0x1.5) Recommended replacement part.
Flow way	400mm ² (ø22mm)

Marking

Fire Eater logo, "305783", "DN22, WP 400", Lot number

Installation

O-rings are inspected and shall be in correct position.

Pipe is pushed into SV Tee or Manifold and union is tightened hard by hand.

Manifold must be leakage tested after installation. As parts have been pressure tested at Fire Eater, no further pressure testing is required.

Document:

305783 SV22 Pipe extension

Category:

SV System

Id: TL

Rev:2020.06.25

Text



Vølundsvej 17
DK- 3400 Hillerød
Tel +45 7022 2769
www.fire-eater.com

Maintenance

Keep clean and clean and inspect for corrosion.

Routine testing

No routine testing is required for this component.

Replaceable parts

If the parts are dismantled, it is recommended to replace the O-ring, suitable replacement O-ring is 2260152 (26.0x1.5).

No other serviceable parts.

Standards & approvals

Pressure Equipment Directive (98/23/EC) (PED)

Pressure Equipment Directive (92014/68/EU) (PED)

Document:

305783 SV22 Pipe extension

Category:

SV System

Id: TL

Rev:2020.06.25

Text

1

2

3

4

5

6

7

8

9



Vølundsvej 17
DK- 3400 Hillerød
Tel +45 7022 2769
www.fire-eater.com