

Ci MT V12 Manifold

Item numbers covered by this datasheet

305792 SV Ci MT V12 Manifold



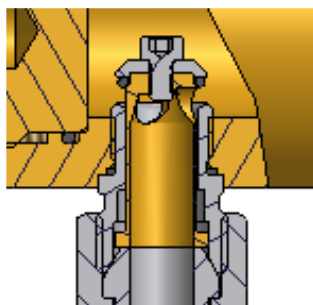
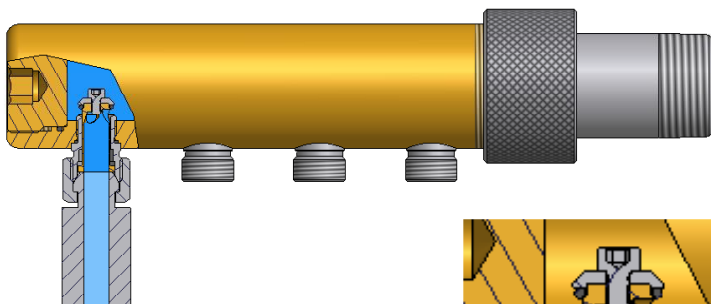
Related components

401612 Bracket MT Vx Cylinder Neck
 305730 Ci MT ISO Orificekit 1"
 305731 Ci MT npt Orificekit 1"
 305670 CM MT Valve assembly (included in the manifold for each hose connection)
 305623 Ci MT Pressure Switch kit
 30570x Ci MT Manifold

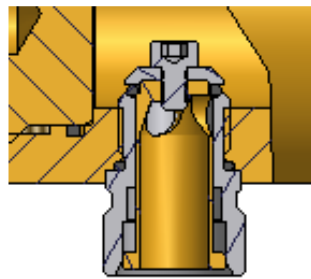
General

The SV Ci MT V manifold is used with the Selector Valve system (SV22), where all cylinders connected to the manifold (and to the distribution manifold if no non-return valve is fitted) are to be activated at the same time.

The manifold is designed with angled connections to ease installation of cylinder batteries in combination with the 401612 - Bracket MTVx - CylNeck



Check valve with hose



Check valve without hose

Ordering information

When ordering a Ci MT V12 Manifold an orifice kit must also be ordered for each manifold in order to connect the manifold to the pipe system. These kits are available with ISO 7 or NPT thread.

The Ci MT1 has the orifice integrated in the body and connects directly to the pipe system. The tread of the MT1 is 1/2" which can be used for both ISO and NPT sockets

If used in complete cylinder battery installations, a Bracket MT Vx Cylinder Neck is also required.

Document: 3057xx Ci MT Vxx Manifold
Engineering data sheet

Category:
Control inert

Id: JOST
Rev:2017.08.11



FIRE EATER %

Vølundsvej 17
DK- 3400 Hillerød
Tel +45 7022 2769
Fax +45 7023 2769

Text

1

2

3

4

5

6

7

8

9

Specifications**Pressure:**

Work: 400 bar (300 bar fill @ 15°C)

Proof (burst): > 1200 bar

Temperature:

-40 to +70°C

Flow way:max 380mm²/connection (ø22mm)min 50mm²/connection (ø8mm)**Tread connections:**

Hose connection: ISO228 G3/8" (60° seat), male

Pipe connection: MT1: ISO7 R 1/2", male

Orifice connection: MT2-10: M40x1.5, male,

Additional outlet: M30x1.5 special O-ring seal (for Ci-MT pressure switch))

Materials:

Brass, zinc plated steel, tin-nickel plated steel, Viton

Dimension:

LxDxH: see drawing

Weight: see table

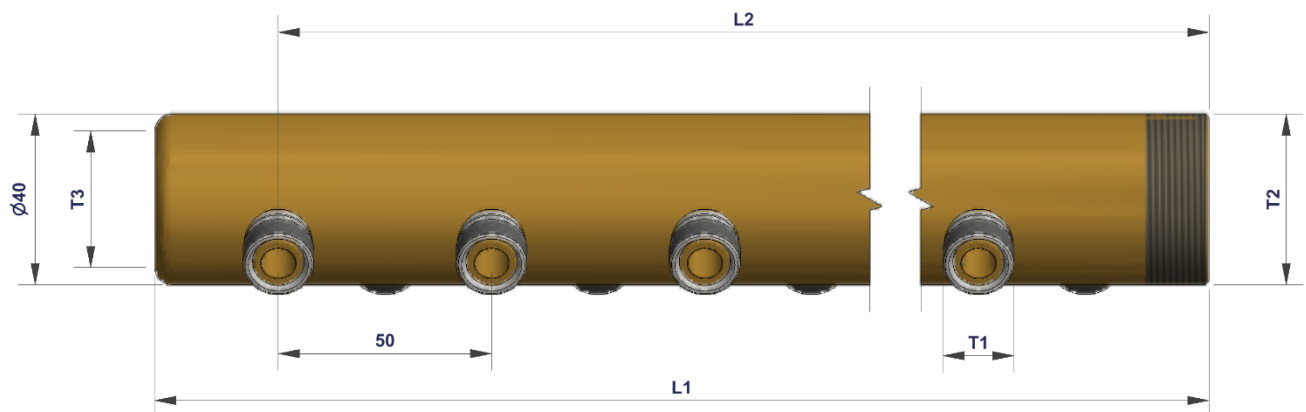


Table 1

Item number	Inlet ports	L1	L2	Weight
	QTY	mm	mm	kg
305792	12	333	304	2,29

Markings**Manifold:** Fire Eater Logo, Ci-MT V##, Serial number, CE1116, yy

Inert gas, WP 40, -40 to + 70 °C, Arrow for each connection

Document: 3057xx Ci MT Vxx Manifold
Engineering data sheet**Category:**

Control inert

Id: JOST

Rev:2017.08.11

**FIRE EATER** %Vølundsvej 17
DK- 3400 Hillerød
Tel +45 7022 2769
Fax +45 7023 2769

Text

1

2

3

4

5

6

7

8

9

Installation

After the Bracket MTVx is mounted on the cylinder neck, the manifold is placed in the bracket forks and secured with two strips.

The manifold is connected to the tube system with a SV22 pipe kit with the necessary length.

Great care must be taken not to damage the o-ring in the connection.

The union nut is tightened by hand, additional tightening by a wrench is acceptable to prevent loosening but not required for tightness issues.

**Operating**

No operations are necessary.

Maintenance

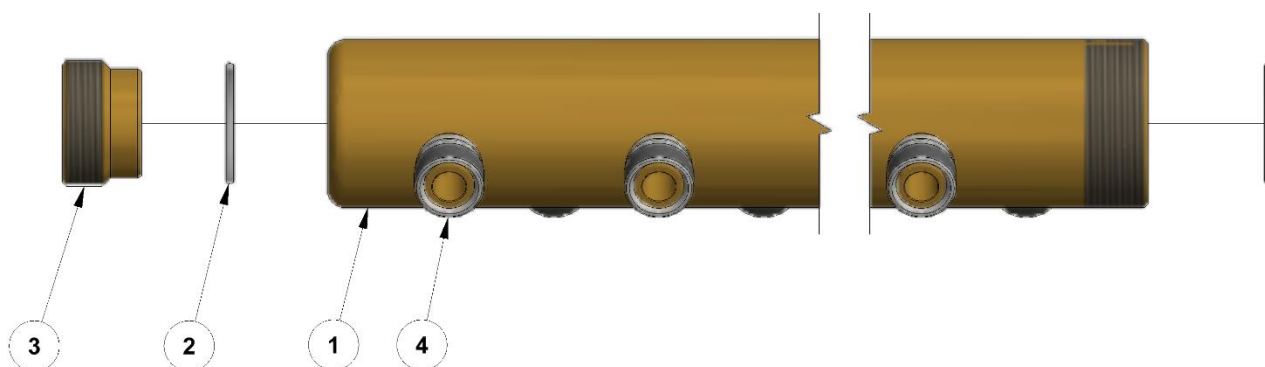
No requirements.

Routine testing

No requirements.

Exploded view

Pos.	Item	Description	Material
1	305642	CM MT Vxx Body	Brass
2	212097	O-ring 26×1.5	Elastomer
3	305212	SM22 M30 Plug	Brass
4	305670	CM MT Valve assembly	Steel



Document: 3057xx Ci MT Vxx Manifold
Engineering data sheet

Category:
Control inert

Id: JOST
Rev:2017.08.11



Vølundsvej 17
DK- 3400 Hillerød
Tel +45 7022 2769
Fax +45 7023 2769

Text

1

2

3

4

5

6

7

8

9

Setup Combinations

NRV22 setup example



Document: 3057xx Ci MT Vxx Manifold
Engineering data sheet

Category:

Control inert

Id: JOST

Rev:2017.08.11



FIRE EATER A/S

Vølundsvej 17
DK- 3400 Hillerød
Tel +45 7022 2769
Fax +45 7023 2769

Text

1

2

3

4

5

6

7

8

9

ZSV25 setup example



Document: 3057xx Ci MT Vxx Manifold
Engineering data sheet

Category:

Control inert

Id: JOST

Rev:2017.08.11



FIRE EATER A/S

Vølundsvej 17
DK- 3400 Hillerød
Tel +45 7022 2769
Fax +45 7023 2769

Text

1

2

3

4

5

6

7

8

9

SV22 setup example



Document: 3057xx Ci MT Vxx Manifold
Engineering data sheet

Category:

Control inert

Id: JOST

Rev:2017.08.11

Text



FIRE EATER A/S

Vølundvej 17
DK- 3400 Hillerød
Tel +45 7022 2769
Fax +45 7023 2769

1
2
3
4
5
6
7
8
9