

**CFR08-15 c, Constant Flow Regulator ø8 - DN15****Item numbers covered by his datasheet**

306201 CFR08-15 c

**General**

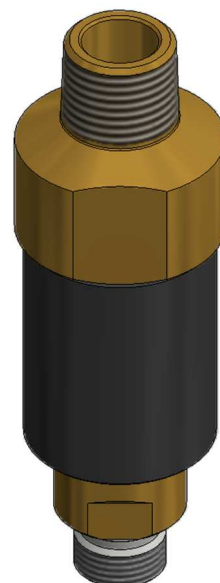
The Constant Flow Regulator is used to regulate the pipe pressure downstream in the system. It ensures a constant outlet pressure of 6.0 MPa during discharge until the cylinder pressure falls below this. A check valve in the inlet prevents extinguishing gas to escape if and when the hose is removed. When a hose is connected the valve will open and ensures activation of the connected cylinder.

**Specifications**

Outlet pressure	6.0 MPa
Temperature	-20°C to +70°C
Materials	Brass, Stainless steel, Aluminium, Steel
Dimensions	ø38x116mm
Weight	0.5kg
Pressure [MPa]	
Work	40.0 MPa
Proof (burst)	>120.0 MPa
Flow way	
In	ø8.0 (50 mm <sup>2</sup> )
Out	Variable ø1.5 to ø14.0 (154 mm <sup>2</sup> )
Thread connections	
Inlet	ISO228/1 - G3/8" w. 60° conical face
Outlet	ISO7/1 - R 1/2", ANSI/ASME B1.20.1 1/2" npt compatible
Backpressure activation	For CFR08-15 c, backpressure activation is currently not an option. For the first version, CFR08-15 a, backpressure activation is possible. CFR08-15 a is no longer available.
Inlet check valve	Yes, the inlet is closed unless a hose is connected
Mounting direction	Any

**Marking**

Fire Eater logo  
 "CFR08-15 c"  
 "Inert gas, 40 MPa, -20 to +70°C"  
 "Outlet pressure: 6.0 MPa"  
 "Sn 123456-123"  
 Arrow + "Flow"

**Document:**

306201 CFR08-15 c.docx

**Category:**

Control inert

Id: HDN

Rev:2019.11.01

**Text**

Vølundsvej 17  
 DK- 3400 Hillerød  
 Tel +45 7022 2769  
 www.fire-eater.com

**Installation**

The regulator is installed on the pipe system inlet and is connected to the discharge valve with a hose. To connect the regulator to the pipe system a 34mm wrench must be used. A 21mm wrench must be used to achieve an anchor hold when tightening the hose on the CFR. The valve is delivered calibrated for the stated pressure.

The pipe system must be rated for the pressure specified on the CFR when:

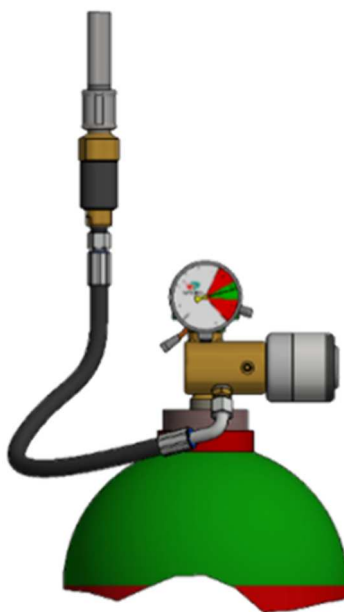
- the outlet is connected to an open pipe system and
- the pipe system is designed using IMT or similar SW (system specific)

**NB:**

***No valves of any kind should be installed between the CFR and nozzle; this includes NRVs, selector valves and/or stop valves!***

***It is important to ensure that the two connections of the CFR are always aligned with each other.***

If there is any kind of valve or restrictor arrangement in the pipe system, the pipe system up to this restriction/valve must be rated for the full cylinder working pressure.



Single cylinder system

**Document:**

306201 CFR08-15 c.docx

**Category:**

Control inert

Id: HDN

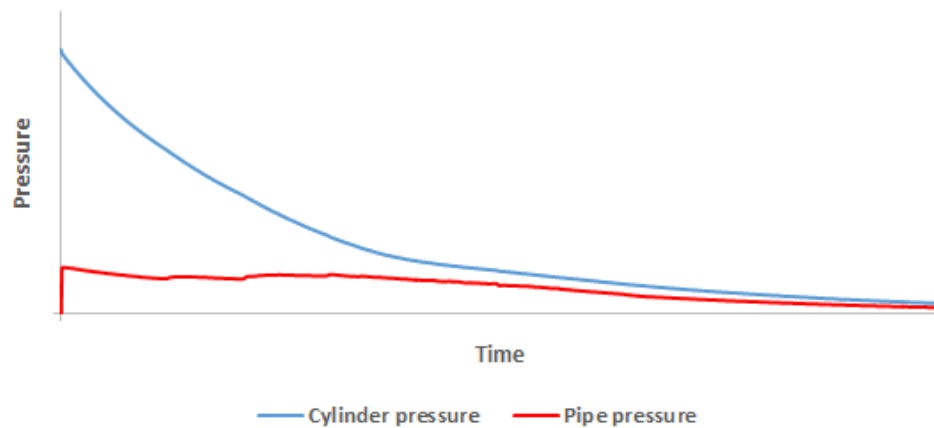
Rev:2019.11.01

**Text**

Vølundsvej 17  
DK- 3400 Hillerød  
Tel +45 7022 2769  
www.fire-eater.com

**Flow characteristics**

The diagram below shows the characteristics of the pipe pressure with a CFR08-15 installed. The pipe pressure is held constant as the cylinder pressure decreases and thereby minimizing the peak flow by increasing the pipe system efficiency.

**Maintenance**

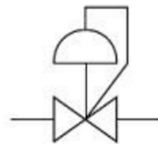
None


**Routine testing**

None

**Symbol**

Standard P&ID symbol for a pressure regulator

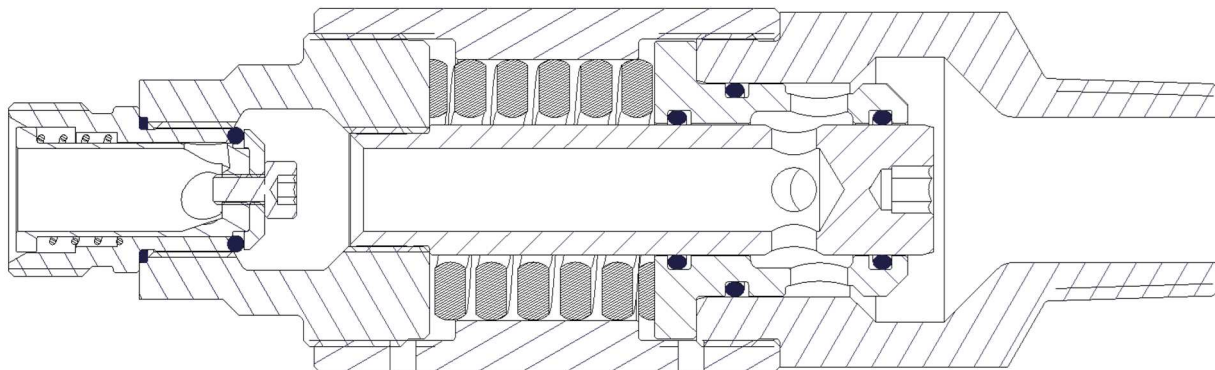


<b>Document:</b> 306201 CFR08-15 c.docx		1	Text
<b>Category:</b> Control inert		2	
		3	
Id: HDN		4	
Rev:2019.11.01		5	
 <b>FIRE EATER</b>		6	
		7	
		8	
		9	
Vølundsvej 17 DK- 3400 Hillerød Tel +45 7022 2769 www.fire-eater.com			

**Section drawing**

Section view in normal non-pressurized position.

There are no serviceable parts in the CFR, if the component is dismantled the device will need factory re-calibration.

**Replaceable parts**

None

**Standards & approvals**

Compliant with Directive 2014/68/EU (PED)

**Document:**

306201 CFR08-15 c.docx

**Category:**

Control inert

Id: HDN

Rev:2019.11.01



Vølundsvej 17  
DK- 3400 Hillerød  
Tel +45 7022 2769  
www.fire-eater.com

**Text**

1	
2	
3	
4	
5	
6	
7	
8	
9	