

ZSV-25 Local Zone Valve

Item numbers covered by this datasheet

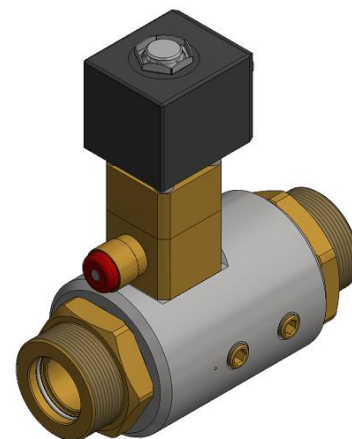
322150 ZSV-25-M40 Sol-man-sw 24

Related item numbers

322170 ZSV-25 iso Sol-man 24V kit

322171 ZSV-25 npt Sol-man 24V kit

321010 ZSV Switch Kit Coil & Position



General

The ZSV-25 Local Zone Valve is intended for use in systems where multiple zones are protected by one cylinder bank. The valve acts as a selector valve directing the gas to the correct zone and is controlled electrically. The valve is pilot operated and uses system pressure to operate the valve mechanism. When the solenoid is powered the system pressure will force the valve open until the system pressure drops below 0.3 MPa. Then it will close automatically.

Specifications

Temperature	-20 °C to 70 °C
Materials	Brass, Stainless steel
Dimensions	
Diameter	Ø62 mm
Length	135 mm
Height	155 mm
Weight	2.3 kg
Pressure	
Work	30.0 MPa
Proof (burst)	>100.0 MPa
Activation	
Pneumatic	Must match INERGEN system pressure
Closing pressure	<0.3 MPa
Thread connections	
Inlet and outlet	M40x1.5
Equipment ports	ISO228/1 - G1/8"
Flow way (Ø; area)	Ø22mm; 380mm ²
Solenoid valve	24VDC, 13W

Marking

Fire Eater Logo
 ZSV-25 Local Zone Valve
 Inert gas, 30.0 MPa , -20 °C to 70 °C
 sn 123456-123
 Arrow indicating the direction of flow

Document: 322150 ZSV-25		Text
		1
		2
Category: Control inert	Id: OLRA	3
	Rev: 2018.06.25	4
		5
		6
		7
		8
		9



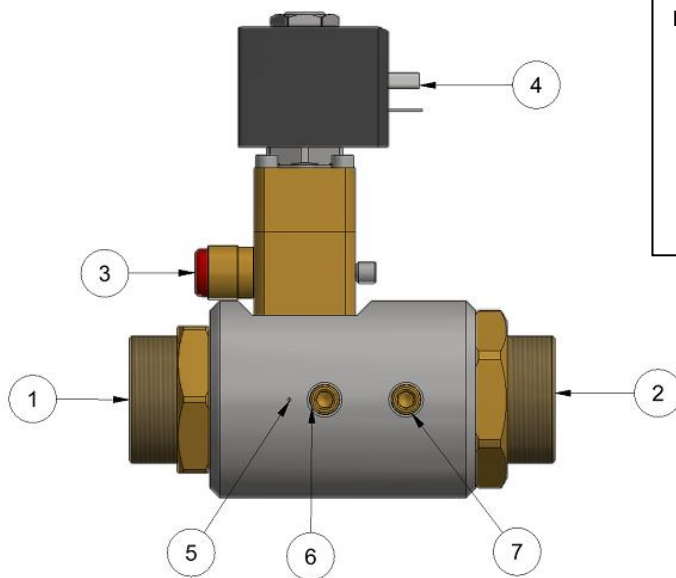
Vølundsvej 17
 DK- 3400 Hillerød
 Tel +45 7022 2769
 www.fire-eater.com

Operating

The valve is pilot operated and must be pressurized on the inlet to order to function correctly. The valve can be operated in three ways: By energizing the solenoid valve (4), pushing the manual button (3) or by pressurizing the activation port (6). Monitoring with additional equipment is possible via the 1/8" ports (6) and (7).

The pneumatic activation chamber is designed with a small leakage to protect the valve from unwanted activation caused by small leakages into the activation chamber. This also ensures that once the valve is open it stays open until the system pressure has dropped below 0.3 MPa. After discharge it will close automatically.

Switch kits (321010) are available to monitor if the valve is open and if the solenoid coil is mounted.



Pos.	Description
1	Inlet
2	Outlet
3	Manual activation
4	Electrical activation
5	Venting hole. Do not cover
6	Port to activation chamber - 1/8" BSP thread
7	Port to outlet side - 1/8" BSP thread

Document:
322150 ZSV-25

Category:
Control inert

Id: OLRA
Rev:2018.06.25

Text

1

2

3

4

5

6

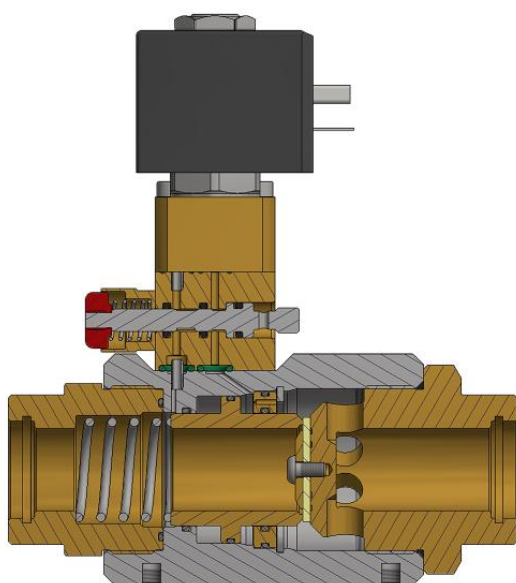
7

8

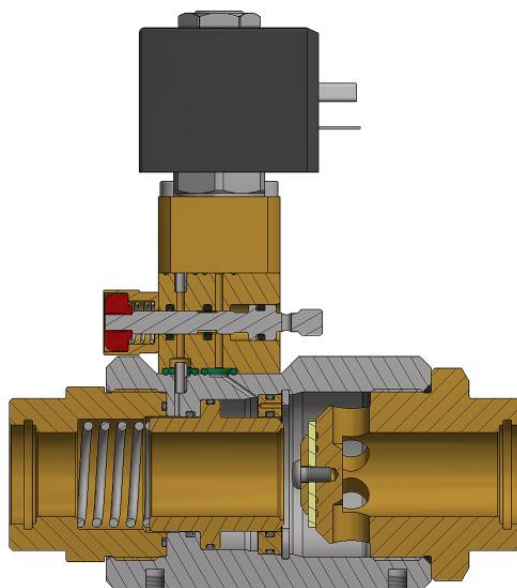
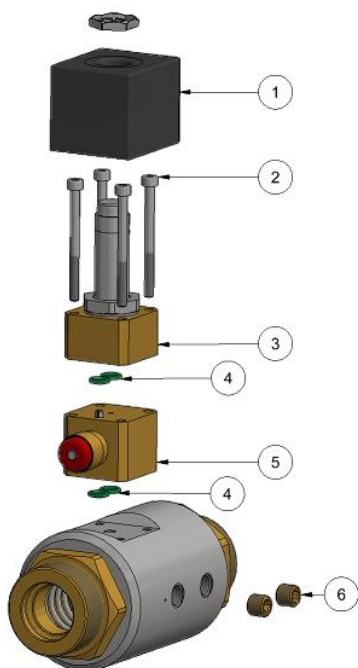
9



Vølundsvej 17
DK- 3400 Hillerød
Tel +45 7022 2769
www.fire-eater.com

Section drawings

Valve closed, Normal position

Valve open, Activated position
Flow ➡**Replaceable parts****Recommended replacement parts**

Pos.	Item	Description	Material
1	307462	ZmNUP Solenoid 24V	-
2	3320505-2	Screw M4x50	Stainless steel
3	307464	ZmNUP Solenoid Operator	Brass, steel
4	2061182	O-ring 6.07x1.78	Elastomer
5	307480	Zm block man M1a assembly	Brass, Stainless steel
6	302083	Plug 1/8"BSPT	Brass
Other	2251162	O-ring 25.1 x 1.6	Elastomer

Document:
322150 ZSV-25

Category:
Control inert

Id: OLRA
Rev:2018.06.25

Text

1

2

3

4

5

6

7

8

9



Vølundsvej 17
DK- 3400 Hillerød
Tel +45 7022 2769
www.fire-eater.com