

## Adapter PA8 - Comet

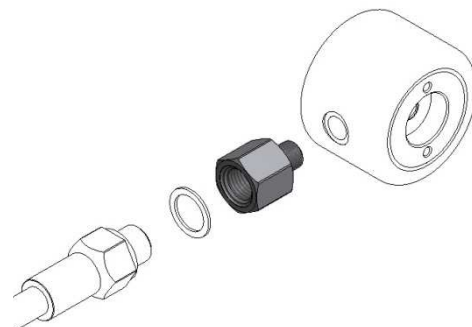
### Item numbers covered by his datasheet

305455 Adapter PA8 - Comet

### Related components

305448 Ci PA8 Pneumatic Actuator

302424 EA-C comet gas actuator



### General

The adapter makes it possible to activate the Ci IV8 valve pyrotechnically with the Comet gas actuator on a PA8 Pneumatic Actuator. For activation redundancy several PA8's with a comet actuator are installed, either in series or on different IV8 valves.

### Specifications

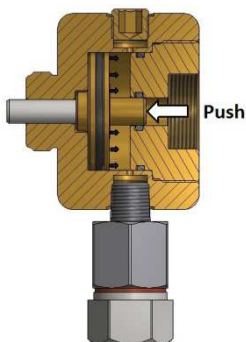
Material	Stainless steel
Dimensions	Hexagon, 19mm Length, 26.8mm
Weight	0.035 Kg
Pressure	40 MPa (400 Bar), Work 144 MPa (1440 Bar), Proof (burst)
Thread connections	Male: ISO 7/1 - R1/8" Female: ISO 228/1 - G1/4"

### Installation

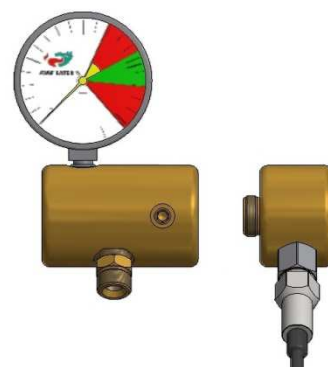
1. Assemble the parts. Use thread sealant on the 1/8" thread - e.g. PTFE tape. The PA8 piston has to be in normal reset position
2. Check for leaks - Push the PA8 piston into fully activated position to generate a vacuum. Hold it for 10 seconds. When released the piston has to bounce at least halfway back with no help. If it does not bounce back, tighten the threads or replace the seals. Push the piston into normal reset position before installation on the Ci IV8 Valve
3. Install the PA8 on the Ci IV8 Valve



1



2



3

Document: 305455 Adapter PA8-Comet

Text

Category:

Control inert

Id: OLRA

Rev:2013.02.11



**FIRE EATER 4/5**

Vølundsvej 17  
DK- 3400 Hillerød  
Tel +45 7022 2769  
Fax +45 7023 2769