

## Ci Actuator Reset Tool

### General

Reset tool for use with Ci IS8 Solenoid Actuator and Ci IM8 Manuel actuator.

The reset tool is used for resetting the actuator after each activation.

### Specifications

Actuator interface:	M20×1.5 (female)
Environment:	Non corrosive storage.
Materials:	Anodized aluminium, brass and stainless steel.
Dimension	
D×L:	ø40× 67 mm
Weight:	0.16 kg

### Markings

Fire Eater Logo, Ci Actuator Reset Tool

### Operation

The tool is used for resetting the Ci family of actuators as specified on the appropriate actuator datasheet. The general procedure is:

1. Turn the knob counter clockwise until the indicator mark is visible.
2. Screw the tool fully on to the actuator (by turning the body and the knob together).
3. Turn the knob clockwise until the actuator is reset (see actuator data sheet).
4. Turn the knob counter clockwise until the indicator mark is visible again.
5. Unscrew the tool from the actuator (by turning the body and the knob together).

### Maintenance

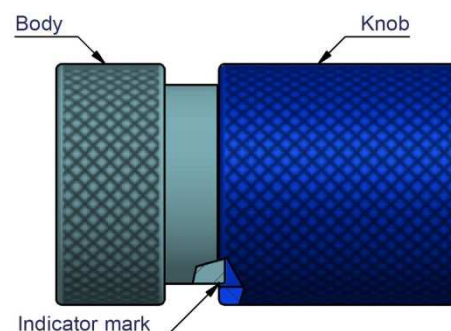
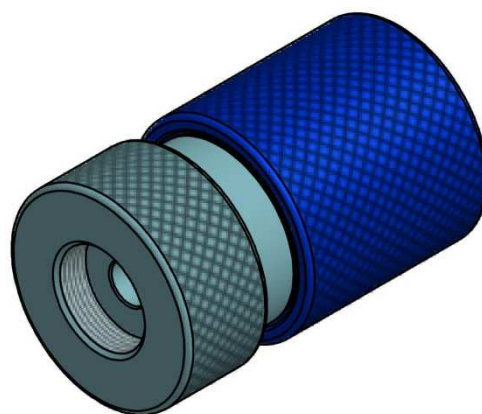
The tool must be stored in a clean and dry place.


Every time the tool is used the tip of the reset tool should be lubricated with a suitable and available grease (type and brand is not critical but we recommend Molykote D paste).

If the tool is dismantled for cleaning, it should be re-lubricated with Molykote D paste. The tool may be disassembled and washed using ordinary detergent, take care not to remove grease on the threads, let the tool air dry before reassembly.

### Important

Never activate an actuator when it is placed in the reset tool as the plunger in the actuator may be damaged if the screw is not turned completely back.



<b>Document:</b> 305495 Ci Actuator Reset Tool.docx		1	Text
<b>Category:</b> Tools & Service		2	
		3	
Id: HDN		4	
Rev:2015.09.01		5	
 <b>FIRE EATER</b> 4%		6	
		7	
		8	
		9	

Vølundsvej 17  
DK- 3400 Hillerød  
Tel +45 7022 2769  
www.fire-eater.com