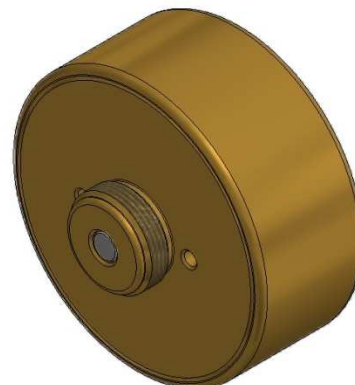


Ci PALP Pneumatic Actuator

General

The actuator is used with the Ci IV8 valve for additional pneumatic actuation of the valve (this actuator is not to be mistaken for the Ci IV8 built-in pneumatic actuator or the Ci PA8 actuator).

The actuator works as a simple pneumatic piston, where the pressure applied is equivalent to the force on the piston.



Specifications

Designation	Ci PALP
Pressure	
Work (WP):	0.4-1.6 MPa
Proof (burst):	> 10.0 MPa
Temperature	-20 to +70°C
Tread connections	
Ci IV8 valve:	M20x1.0
Pneum. activation:	ISO228/1 - G 1/4"
Function	
Operation time:	< 1 sec
Stroke:	4.8 mm

Materials Brass, Stainless steel, EPDM

Dimensions

Also, see drawing next page

Piston diameter:	Ø53.5
Outside dimensions:	Ø62x45
Weight:	0.6 kg

Markings

Fire Eater Logo

"Ci PALP", Serial number

WP 0.4-1.6 MPa, -20 to +70°C

YYYY (Year of manufacture)

Document: 305447 Ci PALP.docx

Category:

Inergen®

Id: KP

Rev:2014.01.06



FIRE EATER 4/5

Vølundsvej 17
DK- 3400 Hillerød
Tel +45 7022 2769
Fax +45 7023 2769

Text

1

2

3

4

5

6

7

8

9

Installation

The Ci PA8 is screwed into the Ci IV8 valve mechanical connection until it reaches the stop.
Before fitting the Ci PALP it must be inspected that it has not been activated (plunger must be flush).
If it has been activated see "Maintenance" for resetting.

Operating

External pneumatic pressure (0.4 to 1.6 MPa) is applied to the Ci PALP, which then actuates the Ci IV8 valve.

Maintenance

After discharge the Ci PA8 has to be reset by simply pushing back the piston until it is flush with the body (sub of 0.5mm is acceptable).

Refit the Ci PALP to the valve as described under "Installation".

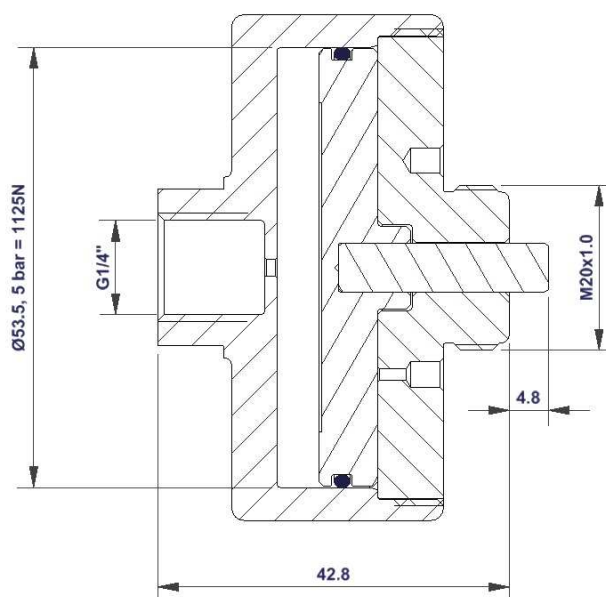
Routine testing

To verify correct function the actuator may be activated once a year.

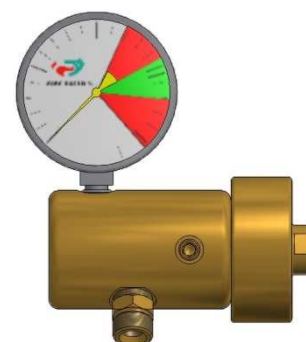
To verify sufficient pressure of the Ci PALP a pressure gauge may be installed in the pneumatic feed line.

Section drawing

The Ci PALP moves a piston forward when pressurized activating the Ci IV8 Valve. The drawing displays the activated position.



Notice: The Ci PALP is not to be disassembled by the installer or any other personnel. During production the threads are sealed.



Document: 305447 Ci PALP.docx

Category:

Inergen®

Id: KP

Rev:2014.01.06



FIRE EATER 4%

Vølundsvej 17
DK- 3400 Hillerød
Tel +45 7022 2769
Fax +45 7023 2769

Text

1

2

3

4

5

6

7

8

9