

**Tool: HWV ½" Open/Close****Item numbers covered by this datasheet**

530602 Tool: HWV 1/2" open/close

**General**

The HWV Open/close tool is used in combination with a ½" Torque Wrench to ensure a correctly closed Hand wheel valve and avoid leakage.

**Specifications****Torque:**

HWV closing torque: 7 Nm  
Max torque: 14 Nm

**Temperature:** -40 to +70°C

**Socket:**

Wrench connection: ½"  
Socket size: 17mm

**Tread connections:**

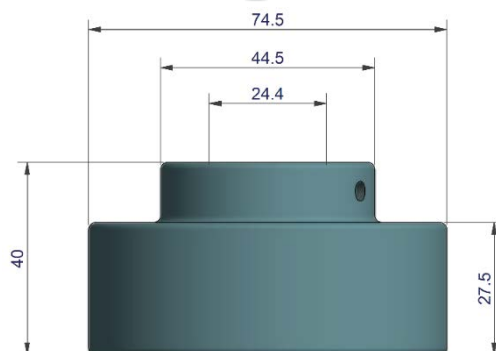
Socket fixture: M5

**Materials:**

Aluminium

**Dimension:**

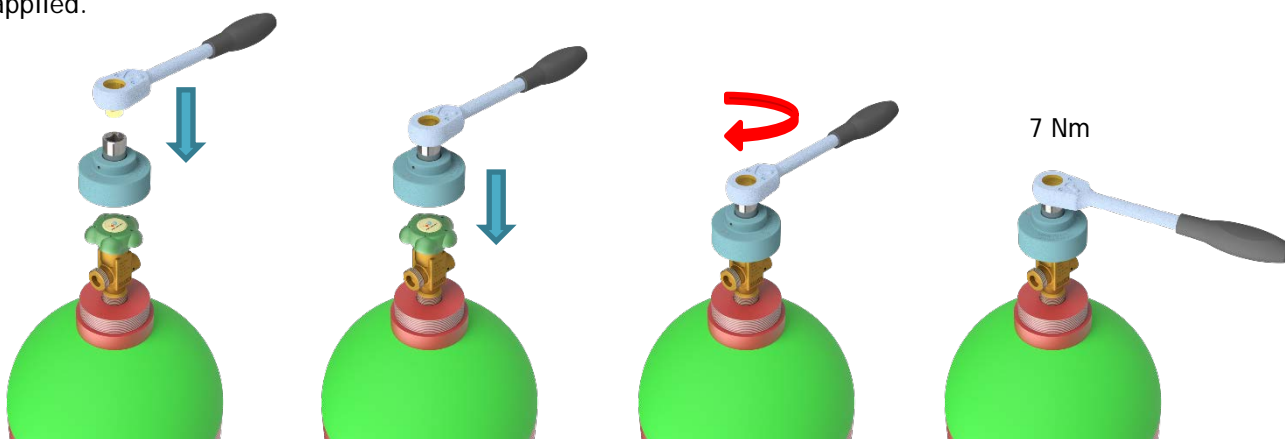
HxD1xD2xD3: see drawing  
Weight: 0.3 kg)

**Marking**

HWV tool: Fire Eater Logo, Tool HWV, Serial number, Torque 7 Nm

**Operation**

The torque wrench is adjusted to 7 Nm. The wrench connects to the HWV tool by inserting it in the ½" socket. Lower the tool onto the Hand wheel valve, and turn the wrench clockwise until the 7 Nm have been applied.

**Document:**

530602 HWV 1-2inch Engineering data sheet

**Text****Category:**

Tools &amp; Service

Id: JES

Rev:2017.09.08

**FIRE EATER**

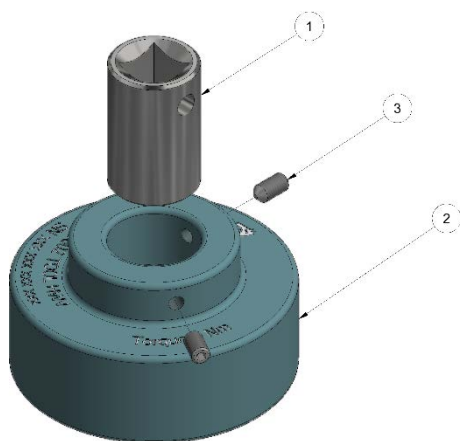
Vølundsvej 17  
DK- 3400 Hillerød  
Tel +45 7022 2769  
www.fire-eater.com

**Maintenance**

No requirements.

**Routine testing**

No requirements.

**Replaceable parts****Recommended replacement parts**

Pos.	Item	Description	Material
1	305903	TM 1/2" Socket 17mm	Steel
2	530602-1	TM tool HWV	Aluminium
3	3425106	Setscrew M5x10	Steel

**Standards & approvals**

N/A

**Document:**

530602 HWV 1-2inch Engineering data sheet

**Text****Category:**

Tools & Service

Id: JES

Rev:2017.09.08



Vølundsvej 17  
DK- 3400 Hillerød  
Tel +45 7022 2769  
www.fire-eater.com