

Cylinder adapter

Item numbers covered by his datasheet

310110	HWV Adapter 1/8" BSPP F
310112	HWV Adapter 1/4" BSPP M
310114	HWV Adapter 1/4" NPT

General

The cylinder adapter is used to connect equipment with standard pipe threads to the cylinder hand wheel valves. It can be used with both 200 and 300 bar hand wheel valves, as the union can be changed easily.



Specifications

Materials Brass, stainless steel, PUR, FPM

Dimensions in mm

Diameter, D Ø38

Length, L 58

A SW27

B SW16

Weight 0.3kg

Pressure

Work 40.0 MPa

Proof (burst) 144.0 MPa

Thread connections

T1 M25x1.5 (300 bar, green cap)

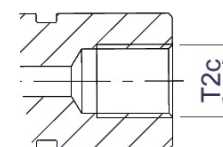
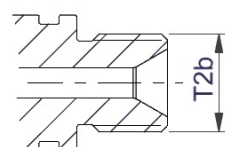
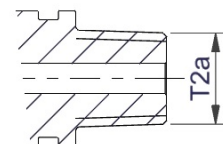
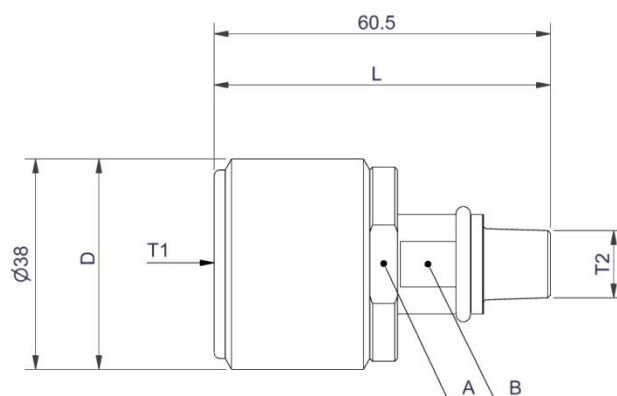
W24.32x1/14 (200 bar, black cap)

T2c (310110) 1/8" BSPP female

T2b (310112) 1/4" BSPP Male w. 60° cone

T2a (310114) 1/4" NPT Male

Flow way (Ø; area) Ø4, 12.5mm²



Document: 31011x HWV Adapter

Text

Category:

Control inert

Id: OLRA

Rev:2014.11.10



FIRE EATER %

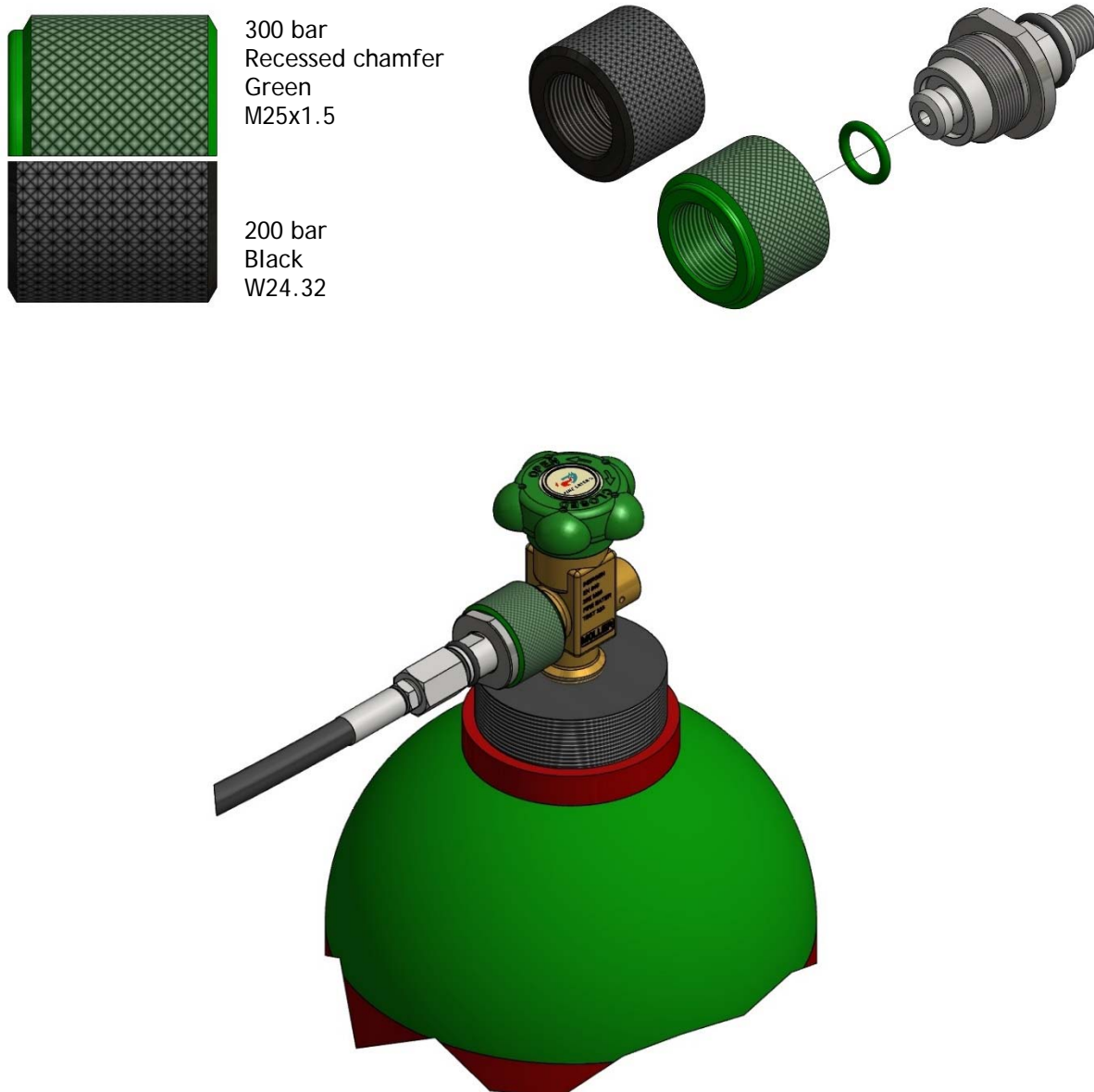
Vølundsvej 17
DK- 3400 Hillerød
Tel +45 7022 2769
Fax +45 7023 2769

Operating

The cylinder adapter is screwed onto the hand wheel valve by hand. Make sure the correct union is used.

The cylinder adapter comes with two different unions. One with thread for 300 bar cylinders (green cap on the hand wheel valve) and one with thread for 200 bar cylinders (black cap on the hand wheel valve). The 300 bar version has a recessed chamfer on the front for identification.

To change the union simply unscrew the mounted union and replace it. A 27mm wrench can be applied to hold the common union part during change.



Document: 31011x HWV Adapter

Text

Category:

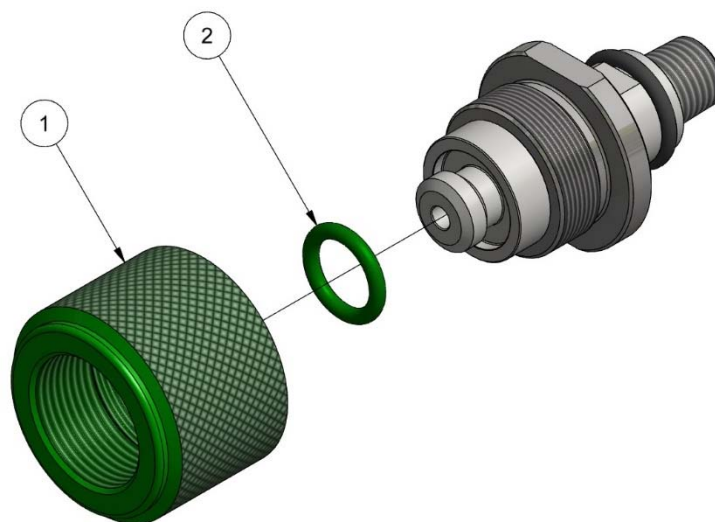
Control inert

Id: OLRA

Rev:2014.11.10

**FIRE EATER A/S**

Vølundsvej 17
DK- 3400 Hillerød
Tel +45 7022 2769
Fax +45 7023 2769

Exploded view

Recommended replacement parts

Pos.	Item	Description	Material
1	305862	TM Cyl Union M25	Brass
	305861	TM Cyl Union W24	Brass
2	2124262	O-ring 12.37x2.62 Z24	PUR

Document: 31011x HWV Adapter

Text

Category:

Control inert

Id: OLRA

Rev:2014.11.10

**FIRE EATER A/S**

Vølundsvej 17
DK- 3400 Hillerød
Tel +45 7022 2769
Fax +45 7023 2769