

PDS II-C Pilot Cabinet

Item numbers covered by his datasheet

308202 PDS Cabinet RAL7035

308206 PDS Cabinet AISI316

General

Cabinet for use with Inergen Pilot Discharge System (PDS)

Must be fitted with PDS system,
suitable door switches and accessories (to be ordered separately)

It consists of:

The cabinet

Mounting plate & rail for door switches

Rail for cylinder bracket and electrical terminals

This is not to be used as an Ex junction box,
for Ex area no terminals are supplied with the cabinet as a
separate Ex approved box must be used for electrical junctions.



Specifications

Ingress protection class IP66

Materials See table

Dimensions (HxWxD) 600x380x210 mm

Weight 15kg

Table 1

	308202		308206
Cabinet & Door	Steel		AISI 316
Mounting plate	Galv steel		Galv steel
Surface	RAL 7035		Brushed, grain 240

Marking

Aluminium sign with FE logo on front door with designation of the
assembled product.



Document:

30820x PDS Cabinet

Category:

Control inert

Id: MK

Rev:2015.09.25

Text



Vølundsvej 17
DK- 3400 Hillerød
Tel +45 7022 2769
www.fire-eater.com

Installation**Painted cabinets**

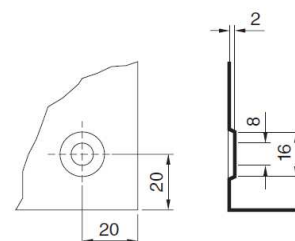
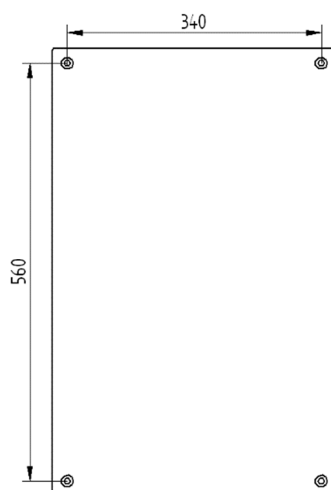
The cabinet should be mounted on a wall via the 4 mounting holes on the backside (mounting screws/bolts not supplied - 8mm screws/bolts recommended, 6mm min.)

The cabinet should be mounted tight against a flat and even surface to ensure IP rating 66 is maintained. If mounted against an uneven or rough surface, sealing around the mounting holes or use of mounting brackets should be considered

AISI316 cabinets

The cabinet is supplied without mounting holes unless requested.

The cabinet is installed either by drilling holes in the cabinet or by welding it directly to the fixture where it should be installed.

**Standards & approvals**

EN62208

UL508A

UL, GL, RMA, LRS, BV and others.

Document:

30820x PDS Cabinet

Category:

Control inert

Id: MK

Rev:2015.09.25



Vølundsvej 17
DK- 3400 Hillerød
Tel +45 7022 2769
www.fire-eater.com

Text

1	
2	
3	
4	
5	
6	
7	
8	
9	