

PDS II-Control Pull Unit

Item numbers covered by his datasheet

308382 PDS II-Control Pull Unit

General

The PDS II-Control pull unit is used in the PDS II-Control zone cabinet [308302] to activate a specific selector valve or an IV8 discharge valve after the PDS II-C 80M Pilot cylinder has been opened.

The PDS II-Control pull unit consists of a ball valve in a normally closed position that is activated by pulling on a manual lever.

Specifications

Outlet:

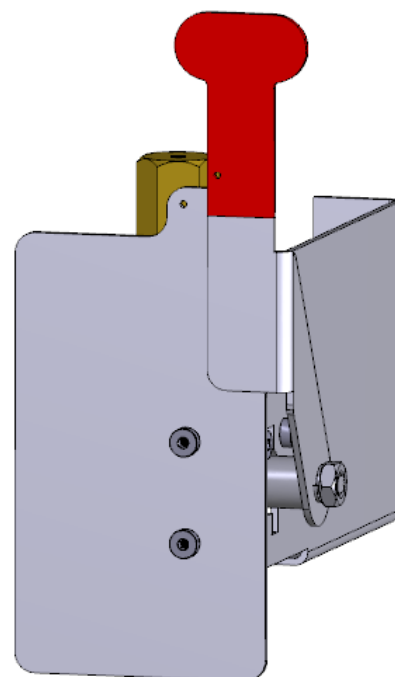
Type: Compression fitting for ø6mm stainless steel tube
Flow way: Ø>2mm

Materials:

See exploded view

Dimensions:

Height: <200 mm
Width: 90 mm
Depth: 178 mm
Weight: 1 kg approx.



Marking

On front plate [308133]: Fire Eater logo, Part number (308382), Batch number

Operation / Activation

Pull the lever until fully open (90° to initial position)

Test & service

Correct pressure at discharge/selector valve is verified by using a class 1.0 gauge.

Function test must be performed annually (or to the requirements of the authority having jurisdiction)

Document: 308382 PDS II-Control pull unit

Text

Category:

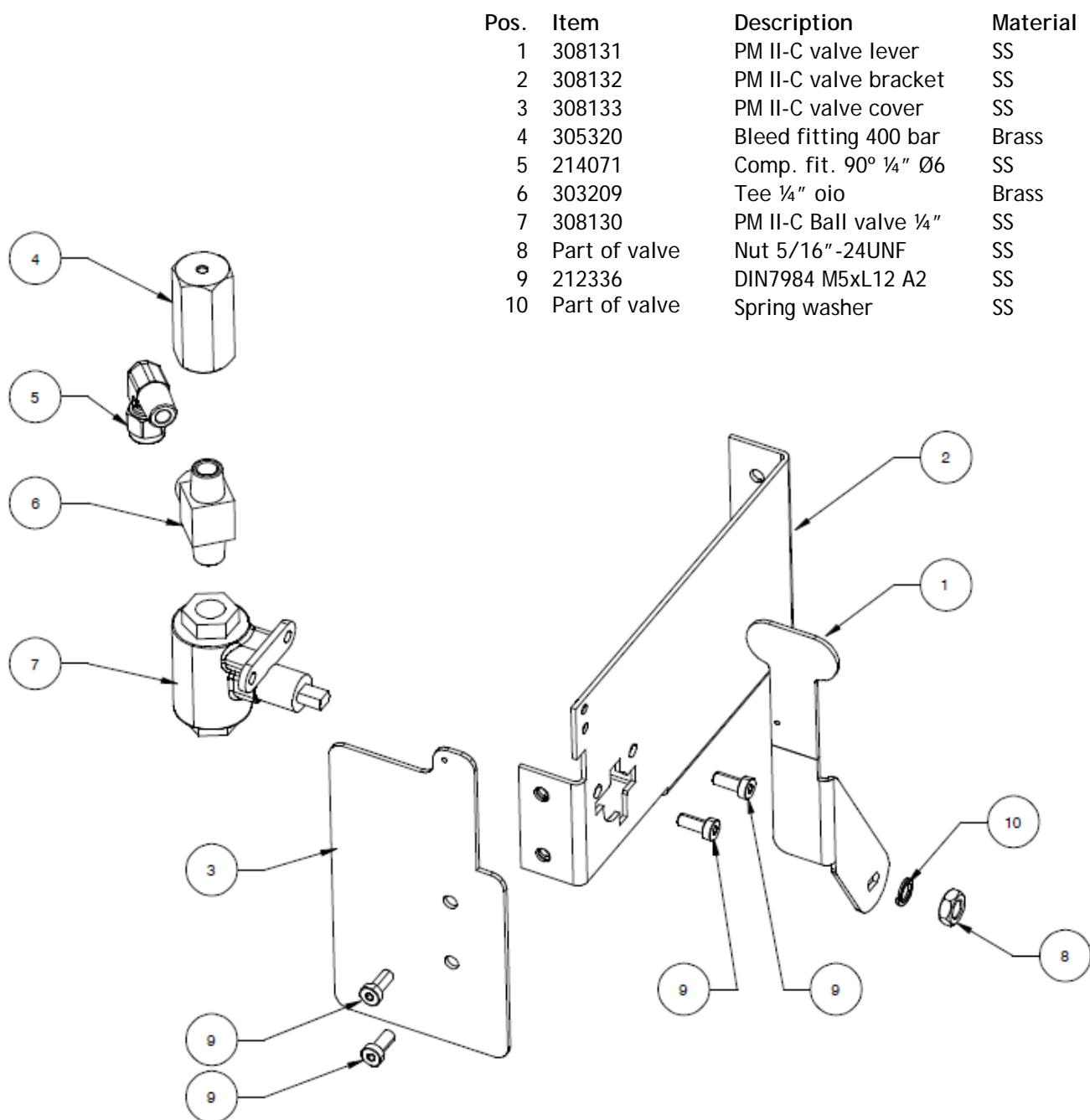
Control Inert

Id: KP

Rev: 18.06.10



Vølundsvej 17
DK- 3400 Hillerød
Tel +45 7022 2769
Fax +45 7023 2769

Exploded view

Document: 308382 PDS II-Control pull unit

Text

Category:

Control Inert

Id: KP

Rev: 18.06.10



Vølundsvej 17
DK- 3400 Hillerød
Tel +45 7022 2769
Fax +45 7023 2769