

Pressure Switch w. Manual Reset

Item numbers covered by this datasheet

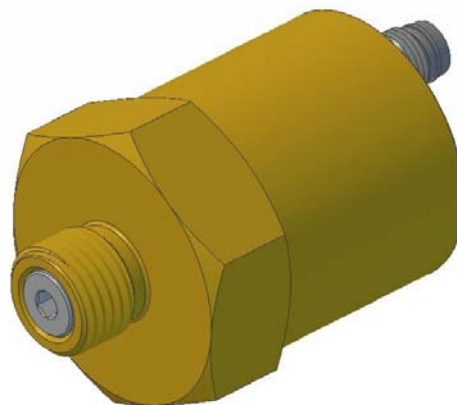
304500 Pressure Switch Manual Reset

General

The switch is designed to monitor if a pipe system has been pressurized. It changes over as the pressure increases and requires to be reset manually.

Specifications

Thread:	ISO228/1 - G1/4"
Connector:	M8 - 3 pole
Switch point pressure:	< 5 Bar
Max working pressure:	400 Bar
IP rating:	64
Dimensions:	See illustration next page
Weight:	0.18 kg
Temperature range:	-40°C to 85°C

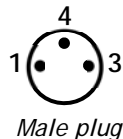
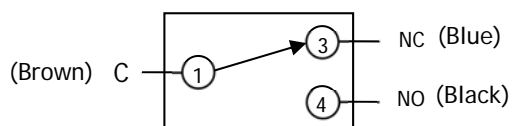


Switch

Voltage:	0-30 VDC
Load:	3 A

Circuit diagram:

Colours refer to the wires in the connection cable



Materials

Housing:	Brass
Mechanical parts:	Brass/Stainless Steel
O-ring:	EPDM

Markings

Fire Eater Logo, "PSMR06a", Serial number
 "Reset", "SP <0.5MPa", "WP 40.0 MPa"
 "Ie: 3A", "Ue: 30VDC"

Document: 304500 Pressure Switch Manual
Reset

Category: SV CiV systems
Id: MK
Rev: 2017.04.18



Vølundsvej 17
DK- 3400 Hillerød
Tel +45 7022 2769
Fax +45 7023 2769

Text

1

2

3

4

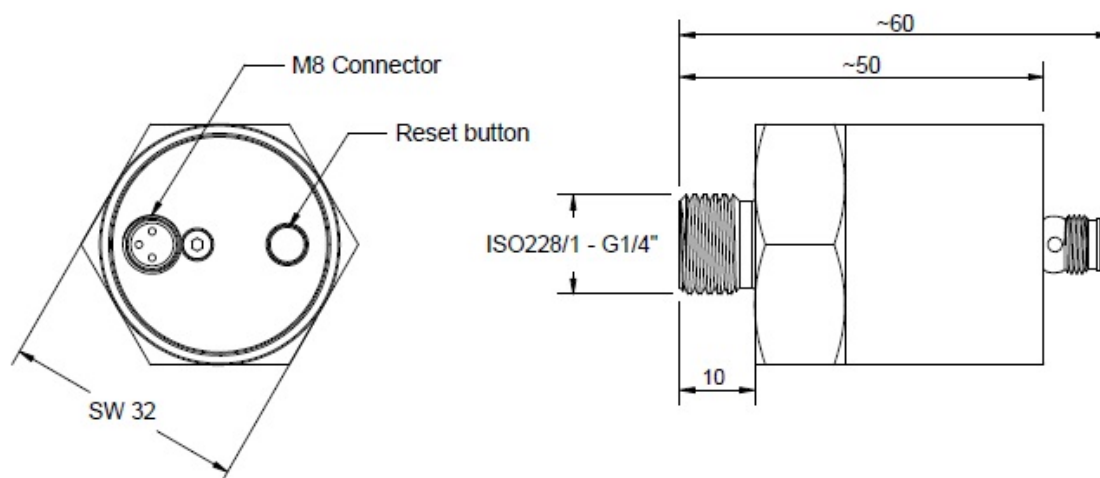
5

6

7

8

9

Dimensions**Installation**

1. Make sure that the switch is installed on a plane and smooth surface
2. Use a wrench to mount the switch not exceeding a torque of 20 Nm. Seal with a 1/4" bonded seal.
3. Connect the switch to the control unit

Resetting

1. Push the reset button after the system is de-pressurized. The switch is reset when the button is flush with the back.

Document: 304500 Pressure Switch Manual
Reset

Category:
SV CiV systems

Id: MK
Rev: 2017.04.18



Vølundsvej 17
DK- 3400 Hillerød
Tel +45 7022 2769
Fax +45 7023 2769

Text

1

2

3

4

5

6

7

8

9