

## SV22 Open switch kit

### Item numbers covered by this datasheet

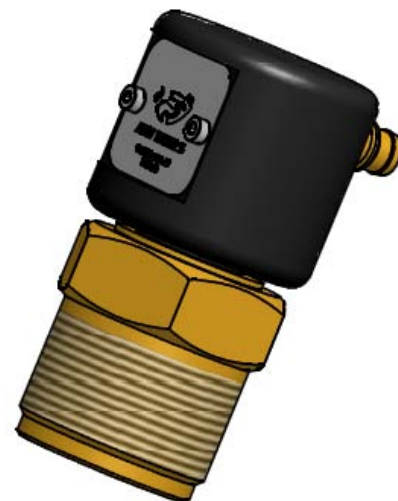
305186 SV22 Open switch kit  
305186-8 SV22 Open switch kit - resistor

### General

Accessory for the SV22 selector valve, used to indicate the valve's state. The switch is a change-over switch that changes when the valve is in the fully open position.

The switch body (with connector) is free to rotate with respect to the valve.

The kit is also available as 305186-8 with customer specific resistor, so that a two-wire monitoring circuitry may be used.



### Specifications

M30x1.5 SV22 connection  
Environm: IP67 (mounted)

### Dimensions

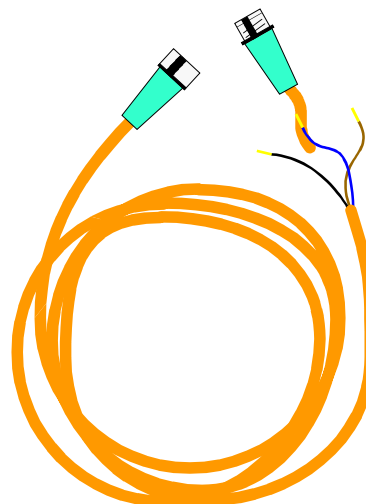
See drawing page 3  
Weight: 0.15 kg

### Switch

Voltage: 30 VDC  
Current: 3 A  
Connection: M8 (see drawing)

### Materials

Adapter: Brass (CuZn39Pb3)  
Housing: POM  
O-rings: EPDM



Document: 305186 SV22 Open switch kit

Text

Category:

SV CiV systems

Id: VS

Rev: 04.01.10



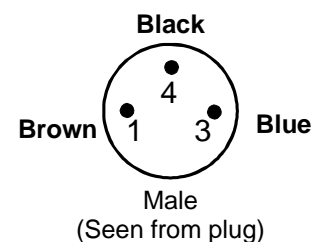
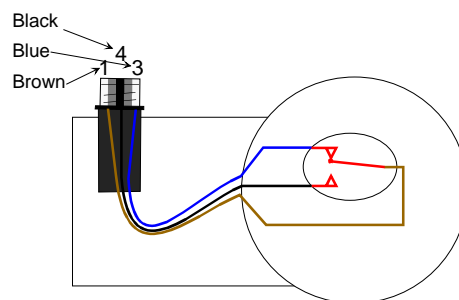
**FIRE EATER** 1/2

Vølundsvej 17  
DK- 3400 Hillerød  
Tel +45 7022 2769  
Fax +45 7023 2769

1	
2	
3	
4	
5	
6	
7	
8	
9	

**Connections****For 305186**

Brown (1) = Common (Com)  
 Black (4) = Normal Open (NO)  
 Blue (3) = Normal Closed (NC)

**For 305186-8**

The brown and the black wires are connected to the control panel or monitoring circuitry.

The resistance of the circuitry is

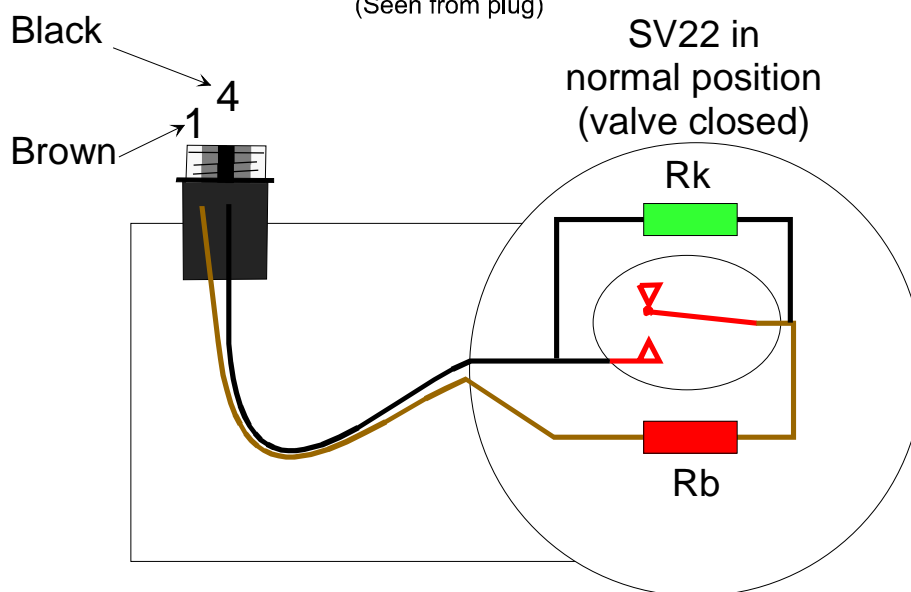
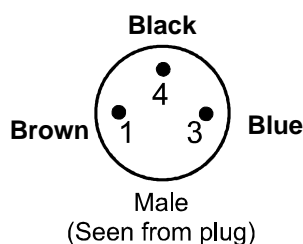
Normal (valve is closed)

Resistance =  $R_b + R_k$

Activated (valve is open)

Resistance =  $R_b$

$R_b$  and  $R_k$  must be specified by the customer.



Document: 305186 SV22 Open switch kit

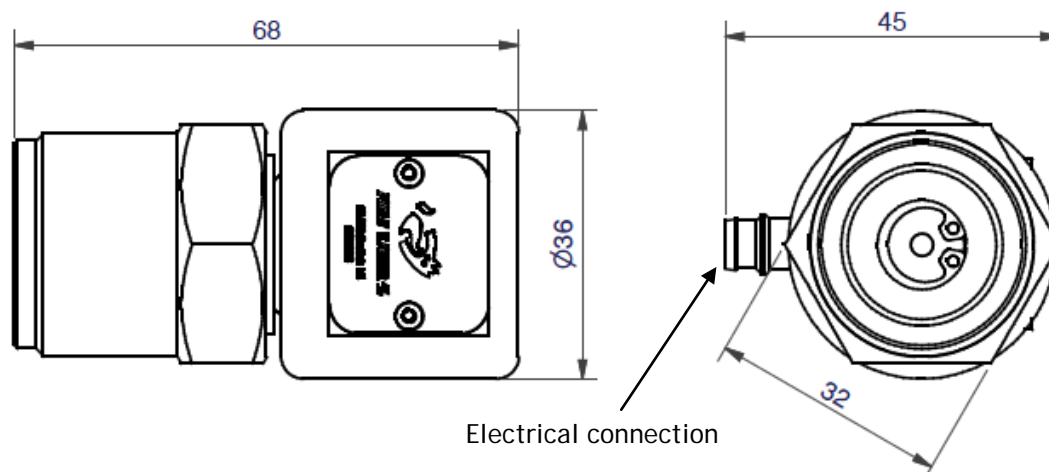
Text

Category:  
SV CiV systems

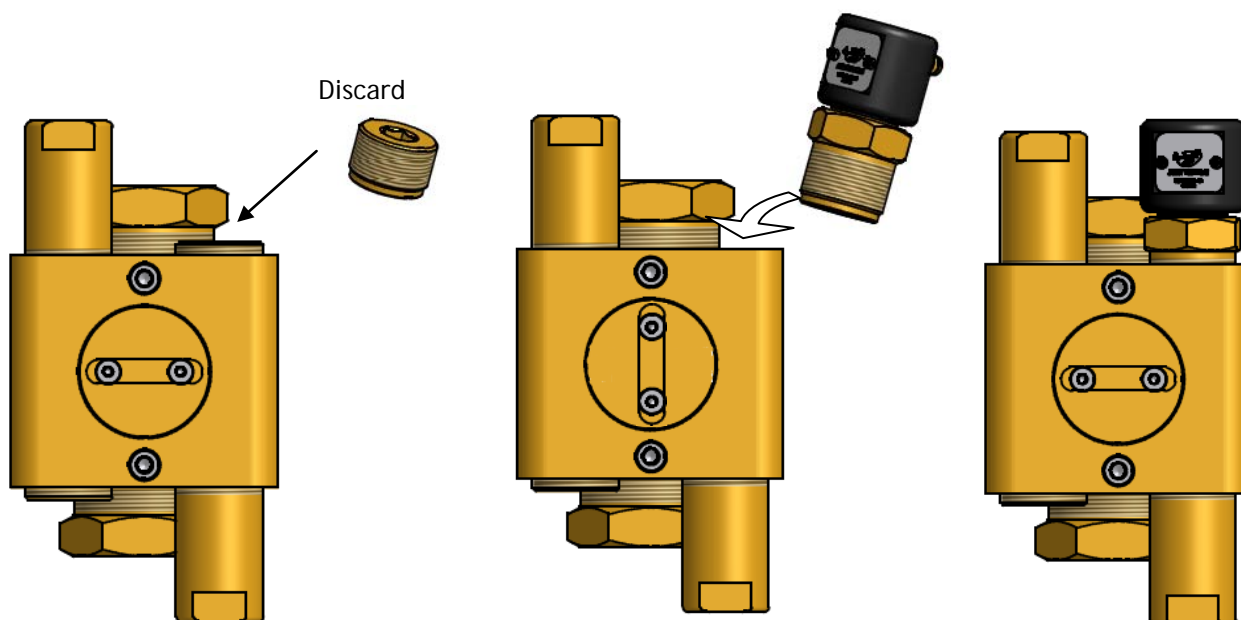
Id: VS  
Rev: 04.01.10



Vølundsvej 17  
 DK- 3400 Hillerød  
 Tel +45 7022 2769  
 Fax +45 7023 2769

**Dimensions****Installation**

1. Remove the SV22 end cover using a 12mm hex key. This might be difficult due to thread lock being present.
2. Rotate the SV valve in the fully open position using the SV reset tool (item 305149)
3. Place permanent thread lock (item 205086 or equivalent) on the thread of the open switch end cover and replace the end cover with the open switch kit using a 32mm spanner.  
*When screwing the open switch end cover, make sure no pressure can build up in the SV valve, either by disconnecting the activation pipes or by bleeding the test port (item 305183) by depressing the check valve while opening the SV valve.*
4. Screw the open switch end cover until it hits the piston inside the SV valve.
5. Plug in the switch cable to the control panel and verify that the switch is activated when the valve is opened.
6. Close the valve and leave it in the closed position



Document: 305186 SV22 Open switch kit

Text

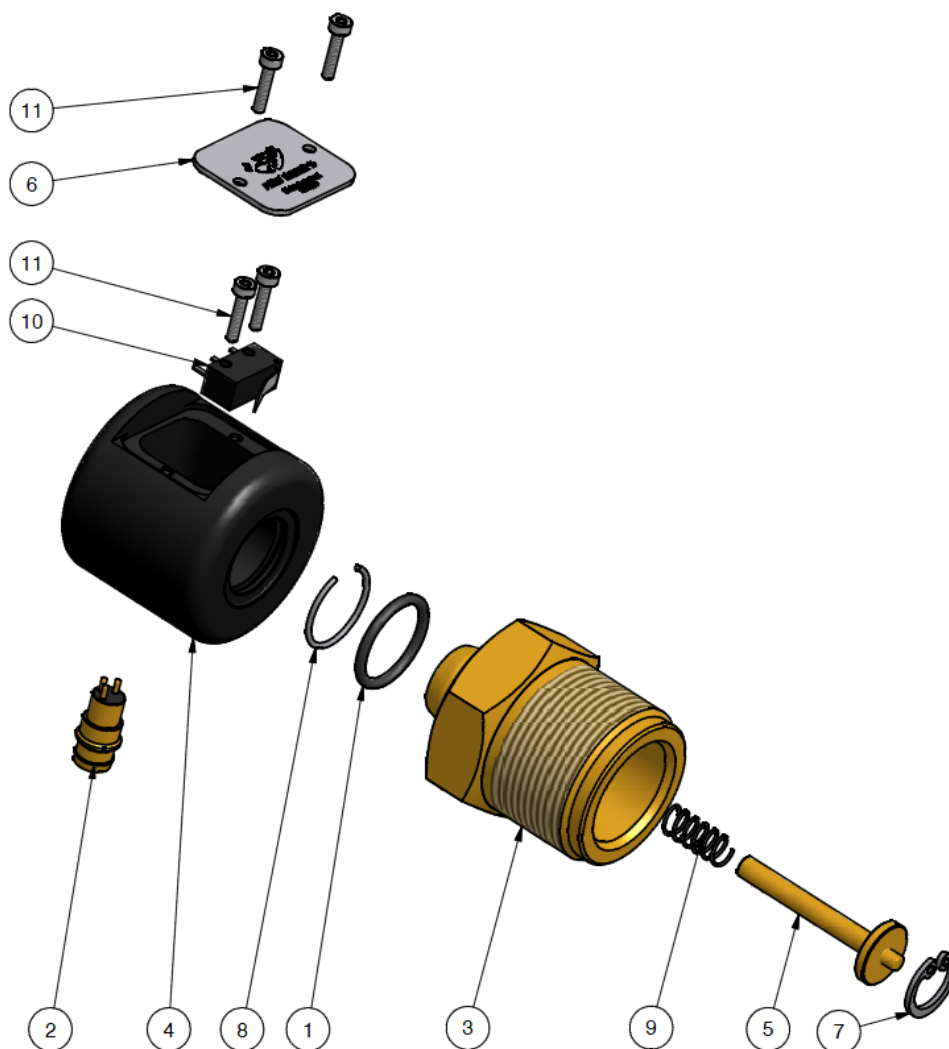
Category:  
SV CiV systemsId: VS  
Rev: 04.01.10

Vølundsvej 17  
DK- 3400 Hillerød  
Tel +45 7022 2769  
Fax +45 7023 2769

1	
2	
3	
4	
5	
6	
7	
8	
9	

*Exploded view*

Pos.	Item	Description	Material
1	212091	O-ring 14.0 x 1.78	EPDM
2	303009	M8 Hanstik 3 pol	Steel
3	305282	SM22 Open switch end cover	Brass
4	305123	SM22 switch Body	POM
5	305283	SM22 Open switch Piston	Brass
6	305125	SM22 switch cover	SS
7	305126	Circlip J12 A2	SS
8	305128	Circlip RB14	Steel
9	305323	Spring 0.5x5x14	steel
10	508116	SV22 switch kit switch (UL approval file No. 41515)	
11	509010	DIN912 M2 L10	SS



Document: 305186 SV22 Open switch kit

Text

Category:

SV CiV systems

Id: VS

Rev: 04.01.10

**FIRE EATER** 1/2

Vølundsvej 17  
DK- 3400 Hillerød  
Tel +45 7022 2769  
Fax +45 7023 2769