

SV48 End plug kit

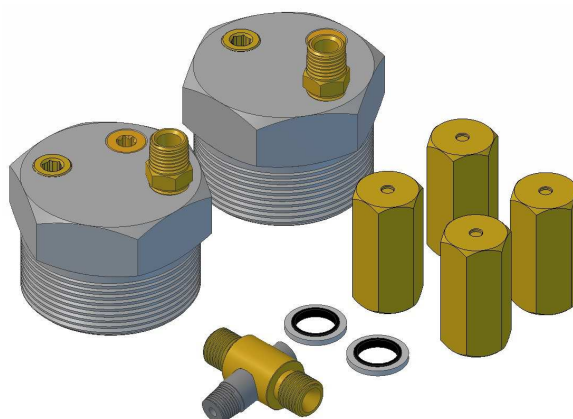
Item Numbers covered by this datasheet

304454 SV48 End plug kit

General

This kit contains components for blinding off openings which must be closed in the SV48 installation.

The 2" end plugs features a built-in burst disc to prevent over pressurisation of the distribution manifold in case of extreme heating applied to the manifold with closed selector valves. Each 2" end plug has two 1/4" BSP ports for installing bleed valves and other equipment.



Related components

304471 SV48 Zone Kit NPT

304482-90 SV Ci MTx 2" kit

30447X SV MT X npt 2" Kit

Specifications

Pressure

Work: 40 MPa

Proof (Burst): >144 MPa

Temperature:

-20°C to +70°C

Connections

Manifold plugs:

NPT 2"

C1: ISO7/1 R 1/4" male, Nipple for bleed fitting

C2: M14x1 female, burst disc installed

C3: ISO228/1 G 1/4" female, blind plug installed

PA Inlet adapter: ISO7/1 - R 1/8" male and

ISO228/1 G 1/4" male

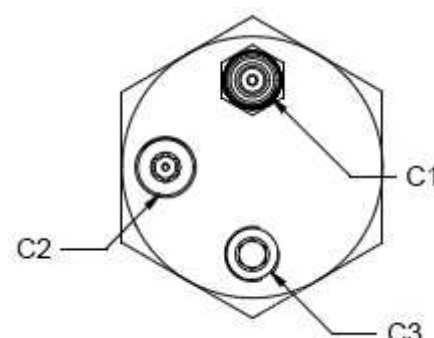
Bleed fittings: ISO228/1 G 1/4" female

Burst disc:

48±2 MPa

Materials:

Brass, Stainless steel, Zinc plated steel



Document: 304454 SV48 Endplug kit.doc

Text

Product:

SV-CiV System

Id: KP

Rev: 12.11.12



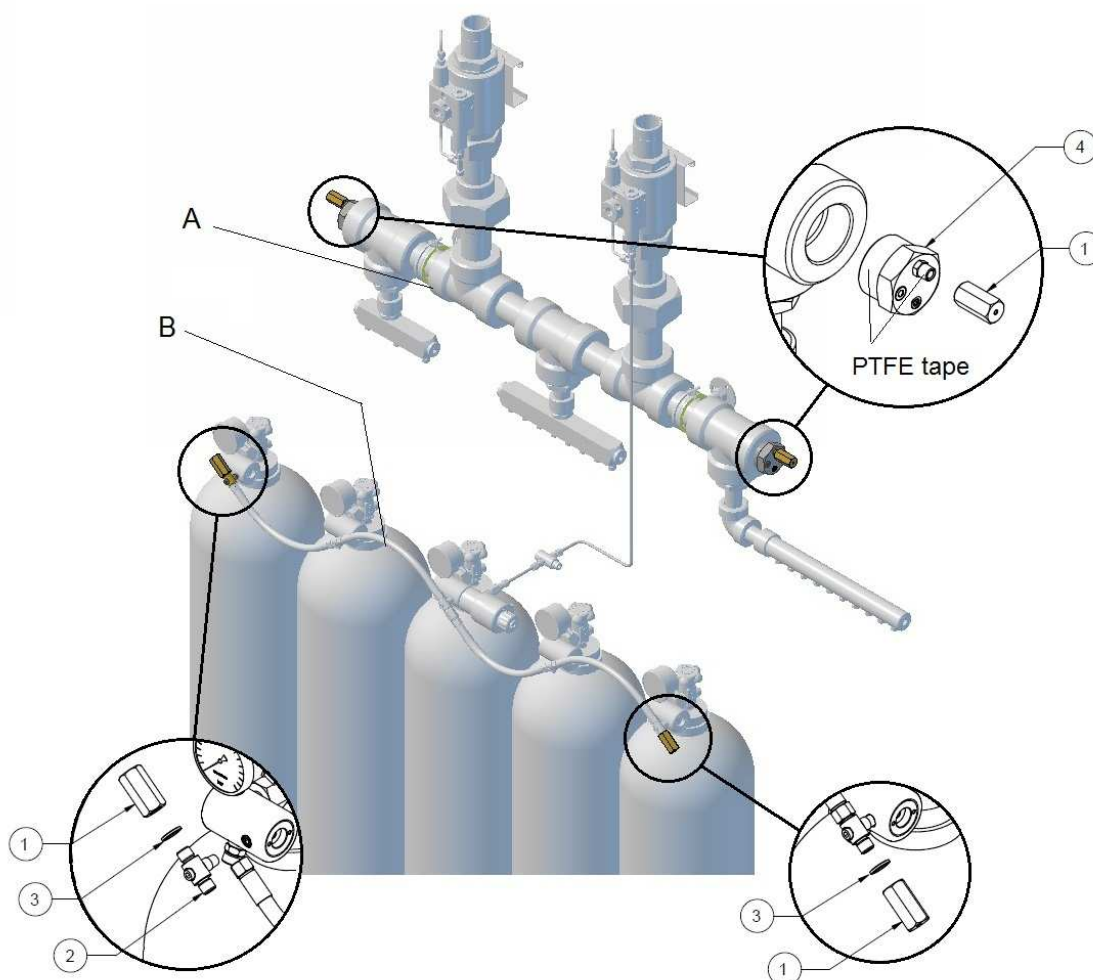
FIRE EATER 1/2

Vølundsvej 17
DK- 3400 Hillerød
Tel +45 7022 2769
Fax +45 7023 2769

1
2
3
4
5
6
7
8
9

Installation

1. The 2" plug assemblies (4) are used to close the ends of the manifold system. Use PTFE tape to seal the threads and tighten according to ANSI/ASME B1.20.1. A pipe section from a manifold or zone kit may have to be removed from the end of the distribution manifold prior to the installation.
2. Remove the 1/8" PA plug in from the valve in the end of the PA line and mount the PA tee (2). Use PTFE Tape to seal the thread.
3. Install two bleed fittings (1) at the ends of the manifold system (A) and seal with PTFE tape only.
4. Install the two bleed ends of the PA line (B) and seal with bonded seals (3) only.



Pos.	Item	Qty	Description	Material
1	305320	4	Bleed Fitting 400 Bar	Brass
2	303126	1	IV7 PA Inlet Adapter	Brass+SS
3	777203	2	Bonded seal G1/4	SS
4	304401	2	2" end plug assembly	-

Maintenance

After system discharge the bleed fittings (1) are reset manually by pressing the pin opposite the connection tread. If a burst disc has ruptured due to over-pressurization all burst discs in the end plug kit are replaced

Document: 304454 SV48 Endplug kit.doc

Product:

SV-CiV System

Id: KP

Rev: 12.11.12



FIRE EATER 1/2

Vølundvej 17
DK- 3400 Hillerød
Tel +45 7022 2769
Fax +45 7023 2769

Text

1

2

3

4

5

6

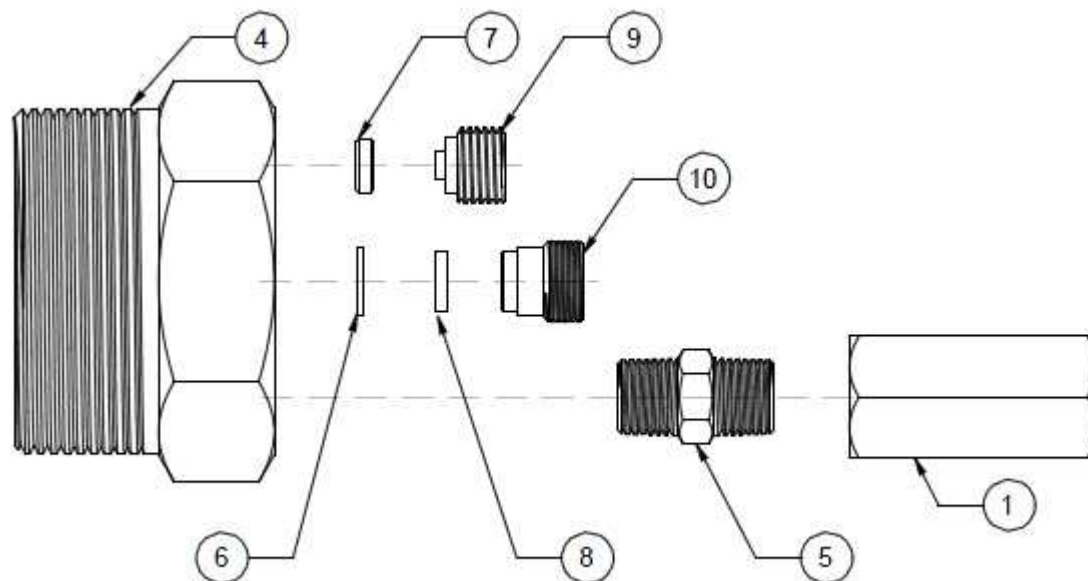
7

8

9

Exploded view

2" end plug assembly



Pos.	Item	Qty	Description	Material
4	304401	2	SM48 npt 2" Burst & Bleed	St + Zn
5	302417	2	Nipple 1/4-1/4 BSPT 400 Bar	Brass
6	305098	2	Washer Ø12.0xØ7.0x1.0 Cu	Cu
7	212181	2	Seal Cu 1/4 Manom	Brass
8	305544	2	Burst Disc 480+/-20Bar	Ni
9	303101	2	Plug 1/4 BSP Manom	Brass
10	305226	2	SM22 Burst Disc Bolt	Brass

Document: 304454 SV48 Endplug kit.doc

Product:
SV-CiV System

Id: KP
Rev: 12.11.12



Vølundsvej 17
DK- 3400 Hillerød
Tel +45 7022 2769
Fax +45 7023 2769

Text

1

2

3

4

5

6

7

8

9