

SV CiV Start Kit

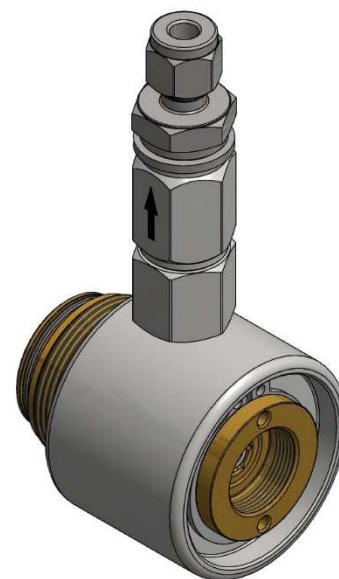
General

Kit containing components for the installation of one SV CiV control valve on a Ci IV8 discharge valve. The SV CiV is **always** installed with an appropriate Ci actuator (Ci IS8, Ci PA8 or Ci IM8) connected to it.

The SV CiV is used to activate a Ci IV8 discharge valve **and** the selector valve connected to it, **when** the actuator (Ci IS8, Ci PA8 or Ci IM8) is activated.

If the Ci IV8 valve is actuated using back pressure (from the manifold) or the built-in PA system (see Ci IV8 datasheet), the SV CiV will **not** open.

The SV CiV control valve inlet is connected internally to the Ci IV8 valve, therefore it requires no external gas pressure supply.



Specifications

Type:

Mechanically actuated two position spool valve with built-in active bleed and non-return valve on outlet.

Pressure:

Work: 0 to 400 bar
Proof (burst): > 1440 bar

Temperature: -25 to +70°C

Mechanical connections:

Ci IV8: M36 x 1.5 (external)
Actuator: M20 x 1 (internal)

Inlet/outlet connections:

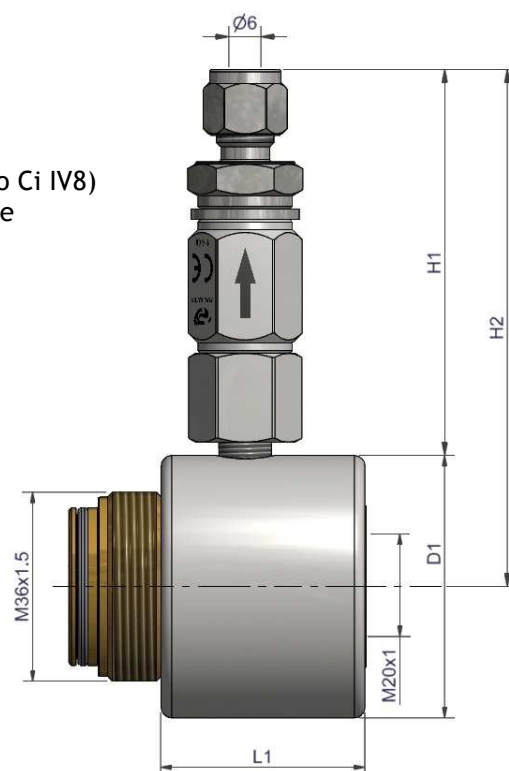
Inlet: Internal to Ci IV8 (when screwed into Ci IV8)
Outlet (to SV valve(s)): Compression ring fitting for Ø6 tube

Materials:

Brass, stainless steel, EPDM o-rings.

Dimensions:

L1: 39 mm
D1: Ø50 mm
H1: ~75 mm
H2: ~100 mm
Weight: 0.794 kg



Document: 305182 SV CiV Start kit

Text

Category:

Control inert

Id: OLRA

Rev: 06.01.15



FIRE EATER %

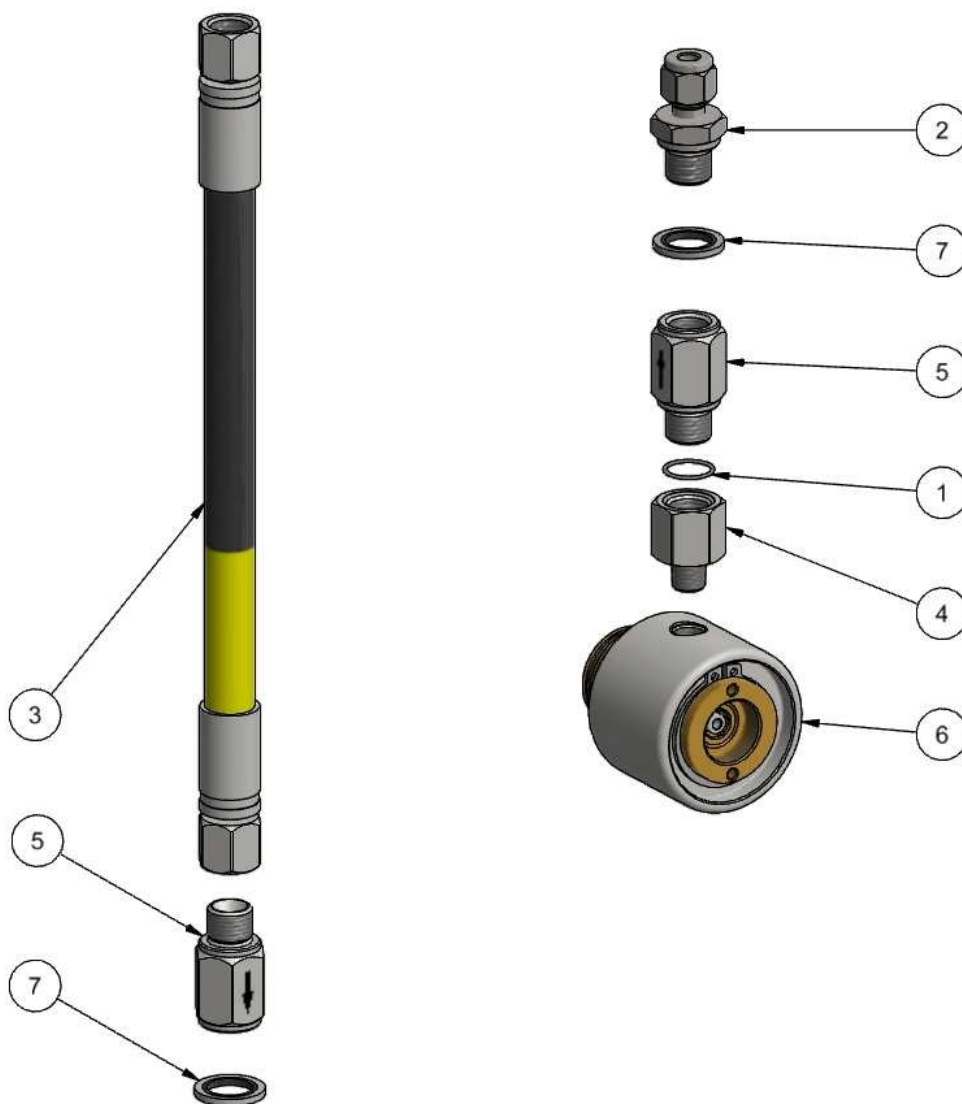
Vølundsvej 17
DK- 3400 Hillerød
Tel +45 7022 2769
Fax +45 7023 2769

1
2
3
4
5
6
7
8
9

Exploded view

Recommended replacement parts

Pos.	Item no.	Description	Material
1	212541	O-ring Ø 13x1	EPDM 75
2	4134221	Comprs fit ø6-1/4bspp Strht	SS
3	303169	Hose 0.250m DN6-400	Synthetic rubber + steel braid + zinc plated steel fittings
4	303552	Adapter ISO 1/8" to 1/4"	SS
5	305302	NR valve 1/4" in-ext	AISI 316 + Brass + NBR
6	305440	SV CiV control valve	Brass + SS + EPDM
7	777203	Bonded seal G1/4"	SS + NBR



Document: 305182 SV CiV Start kit

Text

Category:

Control inert

Id: OLRA

Rev: 06.01.15

**FIRE EATER** ½

Vølundsvej 17
DK- 3400 Hillerød
Tel +45 7022 2769
Fax +45 7023 2769

Markings

The SV CiV control valve is marked (see SV CiV control valve datasheet).

Installation

Warning: The discharge valve must be depressurised before any operation.

Installation of the SV CiV control valve on the Ci IV8 discharge valve is described in the SV CiV control valve datasheet.

Connection to the selector valve(s) and SV service port in a typical installation is accomplished with Ø6mm stainless steel tubing, using the compression ring fitting on the non-return valve outlet.

Notice that after installation of the SV CiV on the Ci IV8, the outlet is free to rotate around the SV CiV body and can be oriented in the most convenient direction for the tube connection to the SV valve(s) and SV service port.

System installation overview

A typical installation with one SV22 selector valve and one Ci IS8 actuator for each zone is shown on the right. Notice that the discharge hose connections from the Ci IV8 valves to the discharge manifold(s) are not shown.

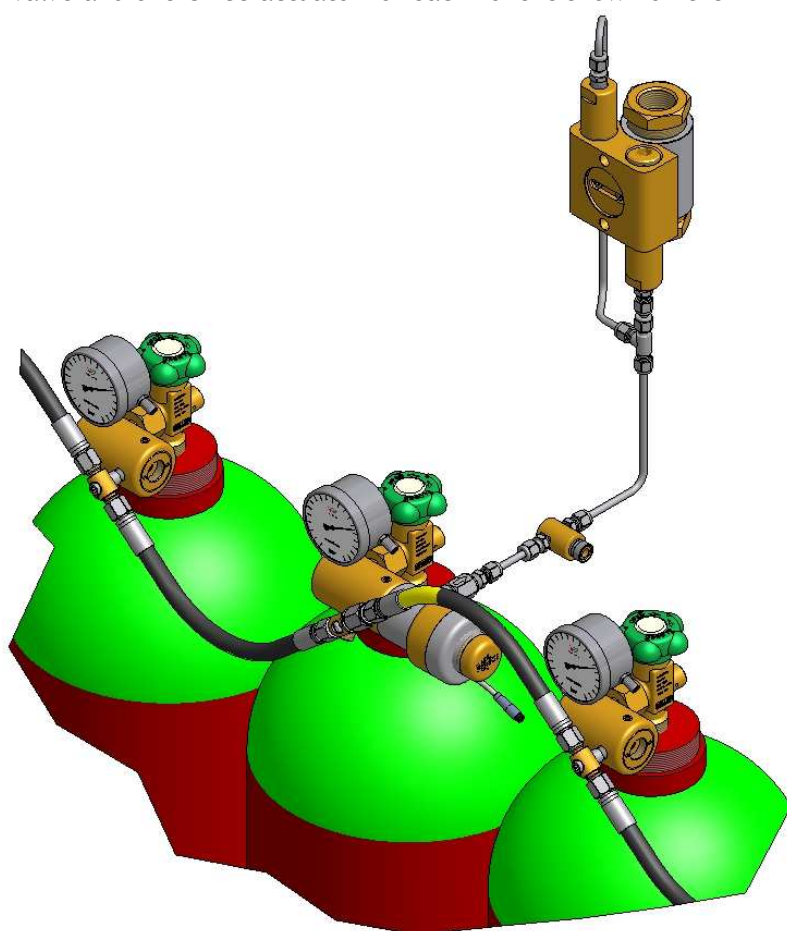
The PA system connection shown in the drawing is configured **not** to discharge cylinders to the right of the cylinder fitted with the SV CiV. This is achieved by using the non-return valve (item no. 305302), fitted between the hose with the yellow marking (item no. 303169) and the PA banjo fitting on the Ci IV8. Notice that a bonded seal (item no. 777203) is used between the non-return valve and the PA banjo fitting to ensure a positive seal.

Due to the built-in SV CiV active bleed function, it is not necessary to use an external bleed fitting in the SV control line.

A redundant system with two SV CiV Start kits (mounted on two different Ci IV8 valves) connected to the same zone is allowed, due to the built-in non-return valve in the SV CiV Start kit.

Due to the mechanical limitations, it is only permitted to connect **one** actuator to each SV CiV control valve (for example it is not allowed to connect a Ci PA8 as well as a Ci IS8 to the same SV CiV control valve).

Notice that the SV Service Port kit shown on the SV control line is not included in the SV CiV start kit, but is ordered separately as item no. 305183.



Document: 305182 SV CiV Start kit

Text

Category:

Control inert

Id: OLRA

Rev: 06.01.15



FIRE EATER %

Vølundsvej 17
DK- 3400 Hillerød
Tel +45 7022 2769
Fax +45 7023 2769

1
2
3
4
5
6
7
8
9

Reset

After activation of the SV CiV control valve and the SV selector valve(s) connected to it, the SV control line will normally be pressurized. Due to the non-return valve on the SV CiV control valve outlet, this pressure will not be released even if the SV CiV control valve is depressurized.

The SV control line pressure can be released through the SV Service Port kit (item no. 305183) using the APTB Tool 0-100 (item no. 305148). Please consult the respective datasheets for instructions regarding these items.


The SV CiV is itself reset automatically when the Ci IV8 is reset (follow the Ci IV8 reset procedure in the Ci IV8 datasheet, treating the SV CiV control valve as a substitute for the Act plug). See SV CiV control valve datasheet for details.

Maintenance

No user serviceable parts. Do not attempt to disassemble. If leakage is detected the complete SV CiV control valve with non-return valve should be replaced.

Routine testing

Leakage test of SV control line and SV CiV Start kit non-return valve every 5 years. This test is done in conjunction with the SV Service Port kit 5 year leakage test (see SV Service Port kit datasheet). No leaks from the Non-return valve or the compression fittings are accepted.

Document: 305182 SV CiV Start kit		1	Text
Category: Control inert		2	
		3	
Id: OLRA		4	
Rev: 06.01.15		5	
 FIRE EATER ½		6	
		7	
		8	
		9	
Vølundsvej 17 DK- 3400 Hillerød Tel +45 7022 2769 Fax +45 7023 2769			