

SV Switch Adapter Closed ATEX

Item numbers covered by this datasheet

305168 SV Switch Adapter Closed ATEX

General

The switch adapter is designed to connect *Technor* limit switches to the SV22 valve. The switch monitors the state of the valve and will change over when the SV22 valve is not fully closed. The switch *is not* included with the adapter.

Specifications

Threads: SV22 interface ISO228/1 - G3/8"
Switch interface M12x1

Materials

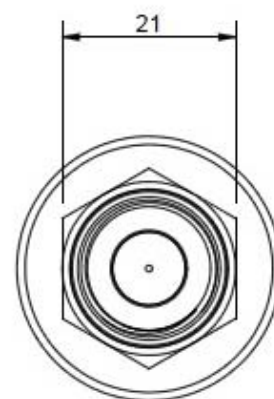
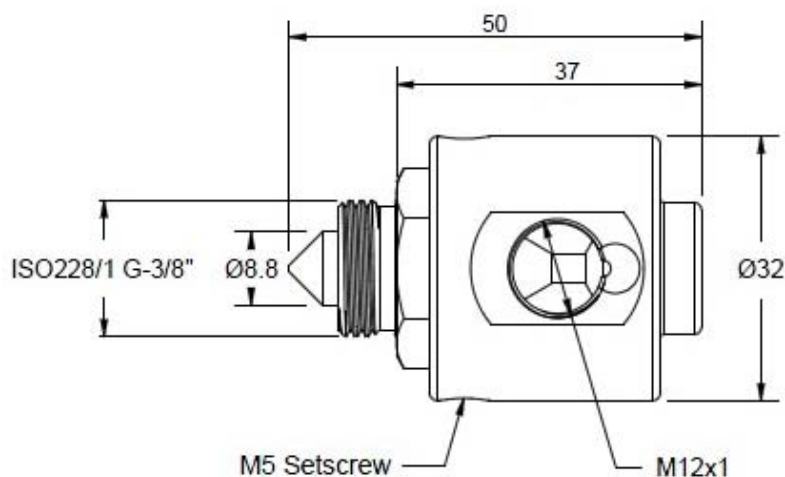
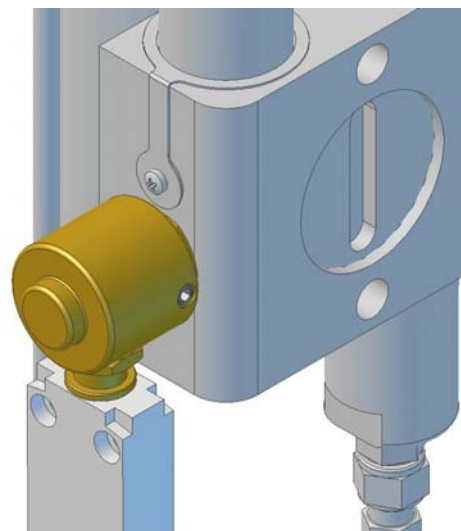
Adapter: Brass
O-ring: EPDM
Setscrews: Stainless steel

Related parts

305188 Tool: SV22 Switch Installation
305149 Tool: SV22 Reset tool
Technor limit switch XCWD21FOL1 (Metal end plunger)
Technor limit switch XCWF110 (Metal end plunger)

Dimensions

Weight: 0.2 kg



Document: 305168 SV Switch Adapter
Closed ATEX

Category:
SV CiV systems

Id: OLRA
Rev: 24.10.14

Text



Vølundsvej 17
DK- 3400 Hillerød
Tel +45 7022 2769
Fax +45 7023 2769

1	Text
2	
3	
4	
5	
6	
7	
8	
9	

Installation

Tools needed:

In-hex key 2.5 mm (303452)

In-hex key 8 mm (303458)

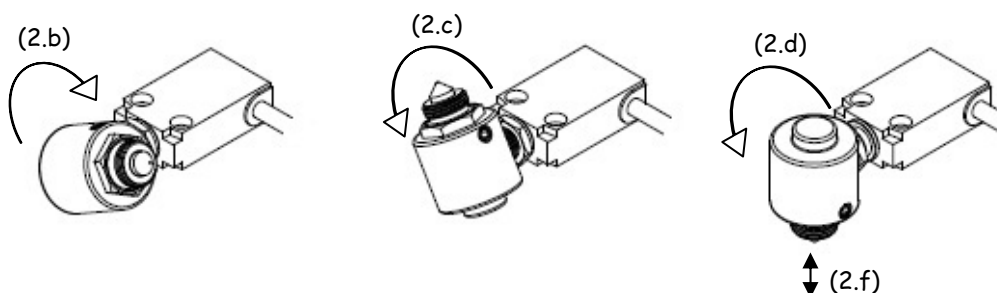
Wrench 17 mm (303432)

SV22 switch installation tool (305188)

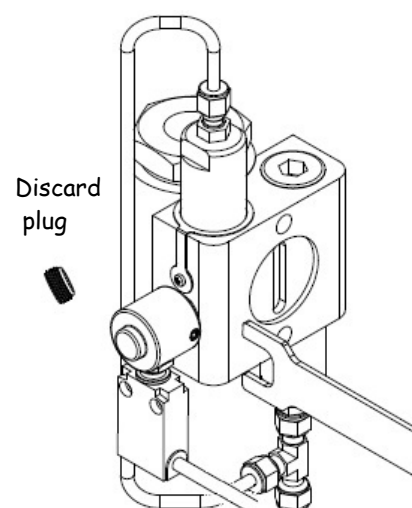
SV22 Reset tool (305149)

Continuity tester, e.g. a multimeter

1. Verify that the setscrews [2] are tightened and the union [5] is pressed against the adapter body [1]
2. Assemble the adapter and switch
 - a. Connect the continuity tester to the switch cable to indicate when switch changes over.
 - b. Verify that the switch has a rounded end metal plunger. Screw the adapter onto the switch until it changes over.
 - c. Turn the adapter counter clockwise till the switch changes back.
 - d. Turn the switch further counter clockwise into any position **between 90° and 270°** from the second change-over point. It is important that the switch is positioned in this range to function as intended.
 - e. Tighten the nut to fix the switch in the right position.
 - f. Check that the switch changes over when the piston is moved back and forth. If it does not change over, repeat step b to f.



3. Install the switch and adapter on the SV22 valve
 - a. Remove the plug (and o-ring for brass plugs) from the 3/8" hole in the SV22 Valve.
 - b. Loosen the setscrews [2] on the adapter slightly to make the union [5] free to turn
 - c. Use tool (305149) to tighten the adapter union [5] against the SV22 Valve
 - d. Tighten the setscrews [2] with the switch pointing straight downwards
4. Verify correct installation
 - a. Measure the electrical contact function when opening and closing the SV22 valve with the SV22 Reset tool. The change-over point should be near the fully closed position.
 - b. If the switch does not change, adjust the switch position by turning it while connected to the SV22 valve till the contact function is correct.
5. Leave the SV22 valve in closed position



Document: 305168 SV Switch Adapter
Closed ATEX

Category:
SV CiV systems

Id: OLRA

Rev: 24.10.14



Vølundsvej 17
DK- 3400 Hillerød
Tel +45 7022 2769
Fax +45 7023 2769

Text

1

2

3

4

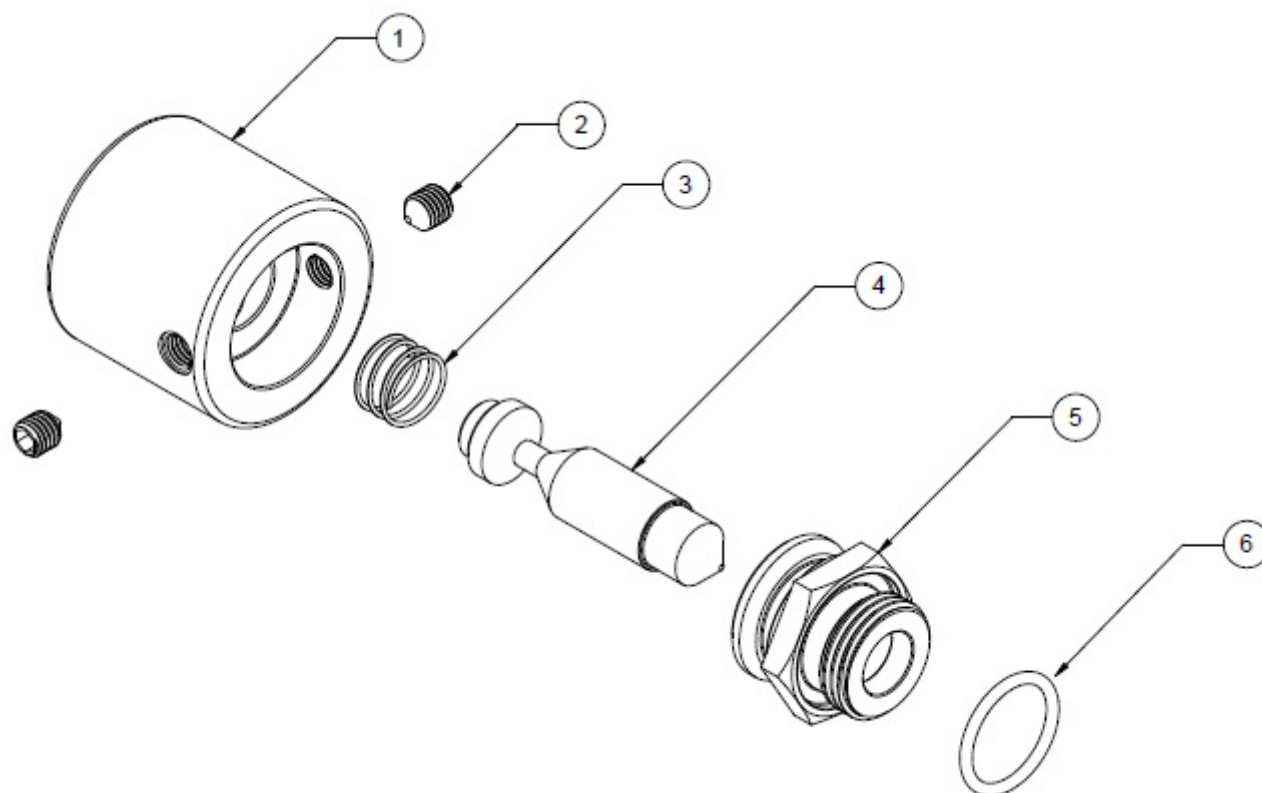
5

6

7

8

9

Exploded view

Pos.	Item	Description	Material
1		SM Switch Atex Adapt Body	Brass
2		M5x6 Setscrew	SS
3		Spring 0.6x10x11	SS
4		SM Switch Atex Adapt Piston	Brass
5		SM Switch Atex adapt Union	Brass
6	2141160	O-ring 14.1x1.6	EPDM

Document: 305168 SV Switch Adapter
Closed ATEX

Category:
SV CiV systems

Id: OLRA
Rev: 24.10.14



FIRE EATER 1/2

Vølundsvej 17
DK- 3400 Hillerød
Tel +45 7022 2769
Fax +45 7023 2769

Text

1

2

3

4

5

6

7

8

9