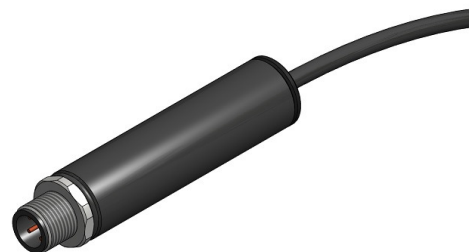


Tool: CI IS8B Tester

General

The Ci IS8B test device is for testing of the solenoid Ci IS8B series.

By inserting the device between the control panel and the solenoid it controls that the Ci IS8B solenoid can be activated at a minimum voltage and that the control panel can supply a minimum current for activation of the Ci IS8B solenoid.



Specifications

Temperature: -20 to +70°C

Connections:

Input (from panel): 1× M12 male 4 pole
Output (to Ci IS8B): 1× M12 female 4 pole via cable

Voltage

Input: 18 - 36 VDC
Output: 16 VDC (at activation for a few seconds)

Materials: Aluminium

Dimension

LxD (mm): 82 × Ø18, without cable
Weight: 0.1 kg

Markings: Fire Eater logo, Item 530506, IS8B Elec. Circuit Tester

Operating

Before testing, take the necessary precautions according to the control panel manual.

1. Disconnect the cable from the Ci IS8B Solenoid and remove the Ci IS8B from the discharge valve (as per service manual).
2. Connect the cable with the M12 female connector from the control panel to the M12 male connector on the tool. Connect the Ci IS8B to the M12 female connector on the tool.
3. Activate the actuator from the control panel. Check that the solenoid has activated. (If the solenoid fails to activate, it must be replaced).
4. Reinstall and reconnect the Ci IS8B to the control panel without the test tool. (Remember to reset the solenoid).

Document:

530506 Tool Ci IS8B Elec Circuit Tester.docx

Category:

Tools & Service

Id: MRP

Rev: 2015.09.03

Text



Vølundsvej 17
DK- 3400 Hillerød
Tel +45 7022 2769
Fax +45 7023 2769

FIRE EATER 4%