

**Tool: Cyl Press gauge M25+W24**

**Item numbers covered by this datasheet**

530509 Tool: Cyl Press gauge M25+W24

**General**

The Cylinder Pressure Gauge allows the user to quickly measure the gauge pressure in gas cylinders. It has a build-in bleed valve and a thread adapter to switch between two cylinder valve types. The gauge is attached to a swivel joint which allows it to rotate and be read from any position.



**Specifications**

**Temperature:** -10 to 60 °C

**Materials:**  
 Tool body: Brass, stainless steel  
 Gauge: Stainless steel, Polyester

**Pressure**  
 Work: 40.0 MPa  
 Proof (burst): >144 MPa

**Thread connections:**

See drawing next page  
 Cylinder connection: W24.32 DIN477 (A, Chamfer on front edge)  
 M25x1.5 (B, Fillet on front edge)  
 Gauge connections: EN837 G1/4"

**Dimensions:**

See drawing next page  
 WxDxH 110x175x50 mm

**Weight:** 1 kg

**Gauge:**  
 Model: WIKA DG10S, 0...400bar  
 Accuracy: ≤0.5% of span ±1 digit  
 Battery: 2x1.5V AA  
 Ingress protection: IP65  
 Units: MPa, bar, psi

**Markings**

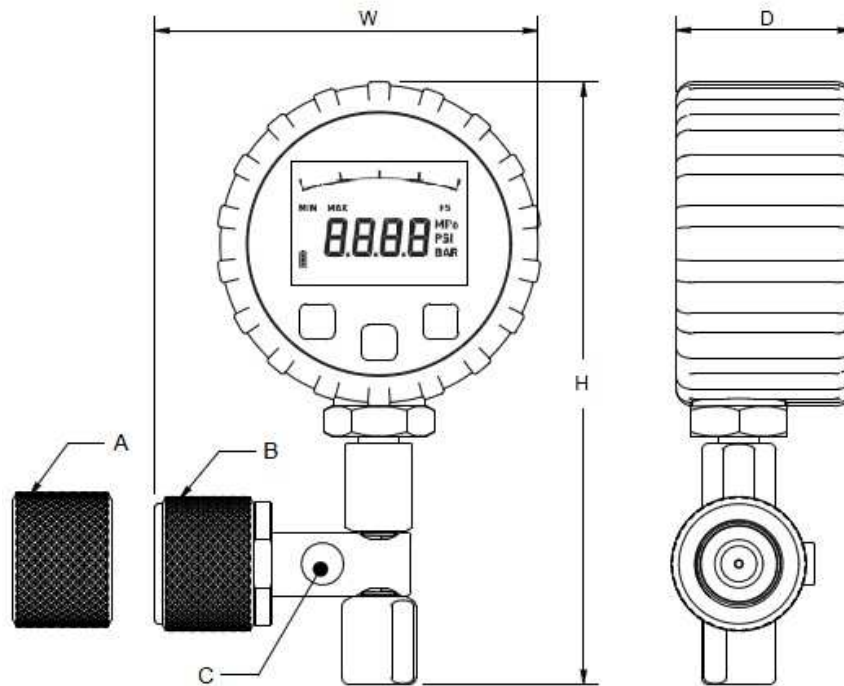
Fire Eater logo  
 "PN 40.0 MPa"

<b>Document:</b> 530509 Tool Cylinder Pressure Gauge		1	Text
		2	
<b>Category:</b> Tools & services	Id: OLRA	3	
	Rev: 23.10.14	4	
		5	
		6	
		7	
		8	
		9	



Vølundsvej 17  
 DK- 3400 Hillerød  
 Tel +45 7022 2769  
 Fax +45 7023 2769

**Drawing**



**Operating**

Measuring cylinder pressure

1. Screw the correct thread adapter onto the cylinder pressure tester. There must be no gap between the thread adapter (7)\* and the union (12). On Fire Eater systems the M25x1.5 thread (B) is for 300 bar valves (green handle). W24.32 thread (A) is for 200 bar valves (black handle). The two union types have different colours on models produced after Oct. 2014.
2. Connect the cylinder pressure tester to the cylinder valve by hand
3. Pressurize by opening the cylinder valve slightly
4. Read the pressure
5. Close the cylinder valve
6. Bleed the tool by pressing the bleed button (C).
7. Disconnect the pressure tester

Verifying cylinder fill

8. Measure the cylinder temperature with an IR thermometer. It is important that the cylinders have been conditioned at constant temperature prior to measuring.
9. Compare the pressure and temperature values with the INERGEN datasheet 200500.

\*Numbers in ( ) refer to the exploded view next page

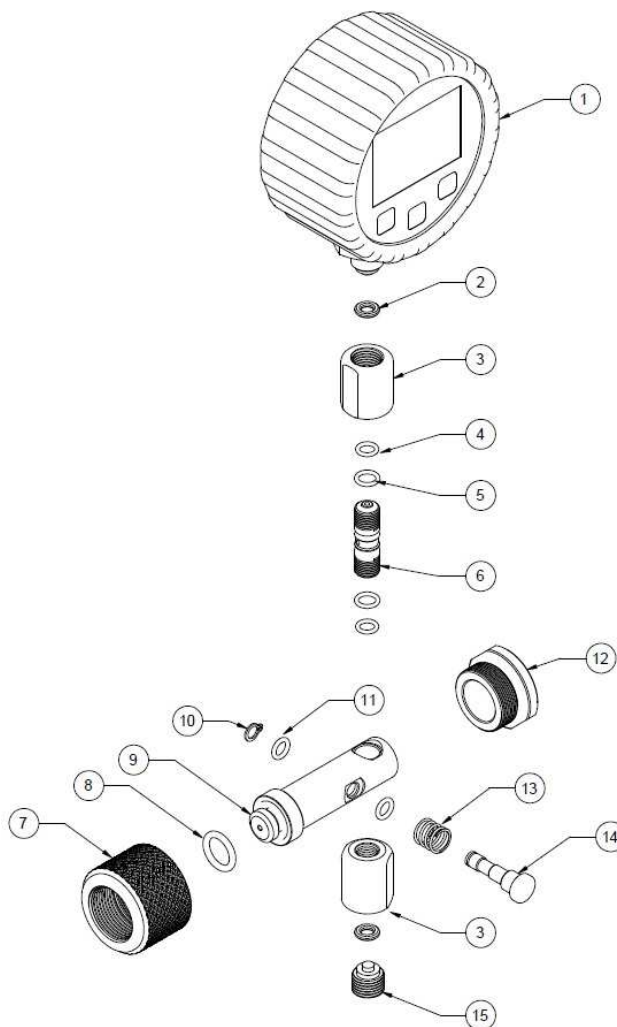
<b>Document:</b> 530509 Tool Cylinder Pressure Gauge		1	Text
		2	
<b>Category:</b> Tools & services	Id: OLRA	3	
	Rev: 23.10.14	4	
		5	
		6	
		7	
		8	
		9	



Vølundsvej 17  
 DK- 3400 Hillerød  
 Tel +45 7022 2769  
 Fax +45 7023 2769

**Exploded view**

This illustration shows all components of the product. Disassembly is not necessary during normal use.



Pos.	Item	Description	Material
1	305858	WIKA DG10S Digital Gauge	SS
2	212181	Seal Cu ¼ manom	Cu
3		TM Cyl Pres adapt ¼	Brass
4		O-ring 6.1x1.6	PUR75
5		O-ring 7.1x1.6	PUR75
6		TM Cyl Pres Bolt	SS
7	305862/305861	TM Cyl Union M25/W24.32	Brass
8	2124262	O-ring 12.37x2.62	PUR Z24
9		TM Cyl pres Body	Brass
10		Circlip Ø6 DIN47	SS
11		O-ring 6.07x1.78	PUR Z24
12		TM Cyl Adapt union	SS
13		Spring 1.0x8.0x17.5	SS
14		TM Cyl Pres B Piston	SS
15		Plug ¼ BSP Manom	Brass

Document: 530509 Tool Cylinder Pressure Gauge

Category: Tools & services

Id: OLRA  
Rev: 23.10.14

Text



Vølundsvej 17  
DK- 3400 Hillerød  
Tel +45 7022 2769  
Fax +45 7023 2769

1	
2	
3	
4	
5	
6	
7	
8	
9	