

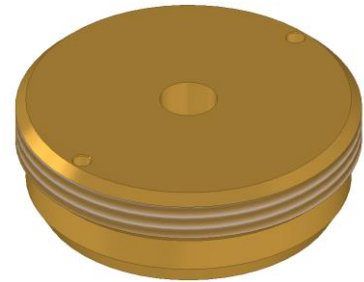
SM48-3x Orifice

Item numbers covered by this datasheet

304507 SM48-3x Orifice

General

The SM Orifice is used as a pressure reducing device in the SV48 valve to control the pipe pressure downstream of the valve. This version is intended to be used in systems with SV48-3" and SV48-4" valves.



Specifications

Dimensions:	Ø59.6 x 20 mm
Weight:	0.25 kg
Orifice:	Ø10 - Ø44 mm
Thread connections:	ISO228/1-G 2"
Materials:	Brass
Temperature:	-60 - +100 °C
Pressure	
Work:	0 - 40 MPa
Proof:	>120 MPa

Marking

Fire Eater logo, "SM48-3x", "304507", "FLOW IN".

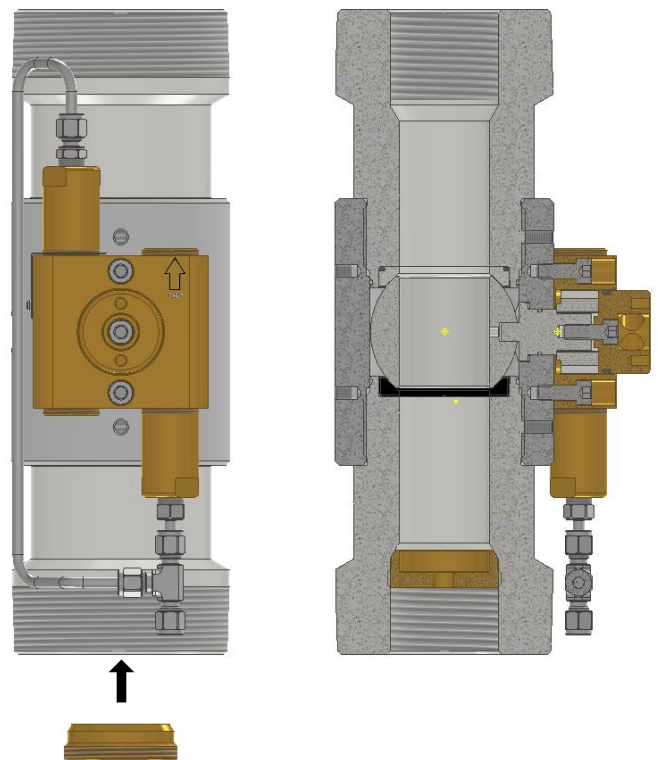
Installation

The orifice size is calculated using the IMT software, drilled and verified using a calibrated calibre. NB the orifice must be sharp-edged and without burrs.

The orifice is mounted in the pipe of the SV48-3" or SV48-4" valve. **IMPORTANT!** The orifice must be placed on the up-stream side of the valve and adhere to marked flow direction.

Maintenance

None.



Document:
304507 SM48-3x Orifice

Category: Control inert	Id: NST
	Rev: 2022.09.28



Vølundsvej 17
DK- 3400 Hillerød
Tel +45 7022 2769
www.fire-eater.com

Text

1	
2	
3	
4	
5	
6	
7	
8	
9	