

## SV22 Adapter 1" Orifice

### Item numbers covered by this datasheet

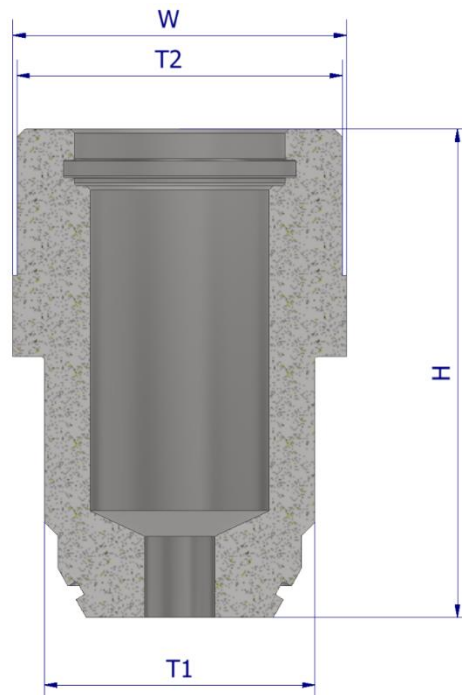
305234 SV22 Adapter 1" Orifice

### General

The orifice is used within the SV22 system, both as an adapter to the metric thread system and as a pressure reducing device to control the pipe pressure downstream of the SV22 valve.

### Specifications

Dimensions (W x H): 41 x 60.1 mm  
 Weight: 0.31 kg  
 Orifice: Ø8.7 - Ø22 mm  
 Thread connections:  
     T1: ISO228/1-G 1"  
     T2: M40 x 1.5  
 Materials: Stainless steel  
 Temperature: -60°C - +100°C  
 Pressure  
     Work: 0 - 40 MPa  
     Proof: >120 MPa



<b>Document:</b> 305234 SV22 Adapter 1" Orifice		1	Text
		2	
<b>Category:</b> Control inert	Id: NST	3	
	Rev:2022.09.28	4	
		5	
		6	
		7	
		8	
		9	



Vølundsvej 17  
 DK- 3400 Hillerød  
 Tel +45 7022 2769  
 www.fire-eater.com

**Marking**

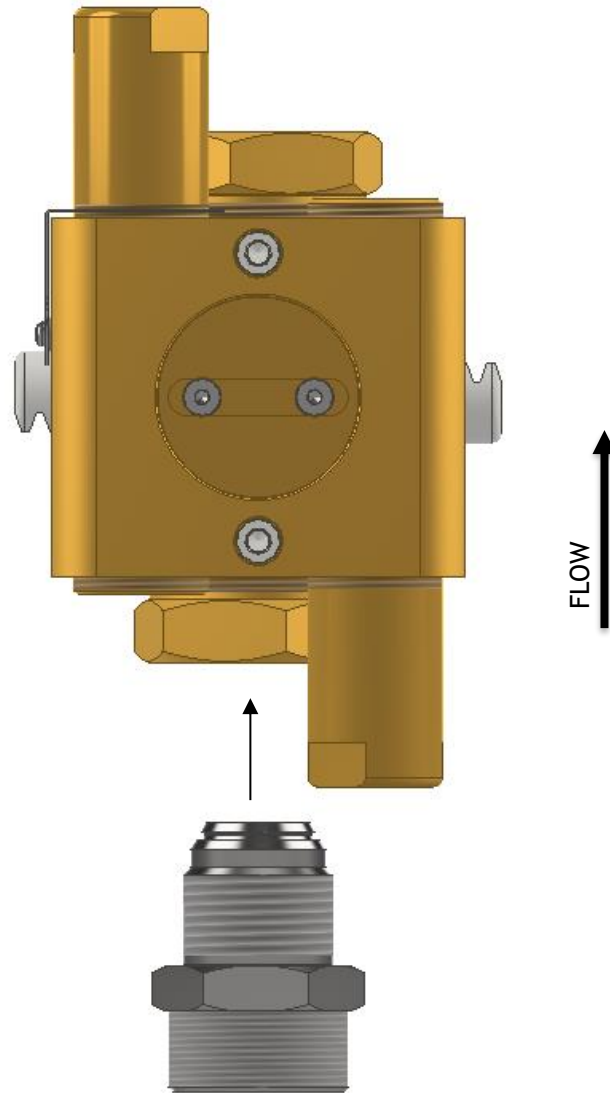
Marking on flats: Flow direction arrow, Fire Eater logo, "305234", "ORM40-G1"

**Installation**

The orifice size is calculated using the IMT software, drilled and verified using a calibrated calibre. NB the orifice must be sharp-edged and without burrs.

The orifice is equipped with a greased O-ring and mounted in the SV22 valve.

**IMPORTANT!** The orifice must be placed on the up-stream side of the valve and adhere to flow direction.



<b>Document:</b> 305234 SV22 Adapter 1" Orifice		1	Text
		2	
<b>Category:</b> Control inert	Id: NST	3	
	Rev:2022.09.28	4	
		5	
		6	
		7	
		8	
		9	



Vølundsvej 17  
DK- 3400 Hillerød  
Tel +45 7022 2769  
www.fire-eater.com