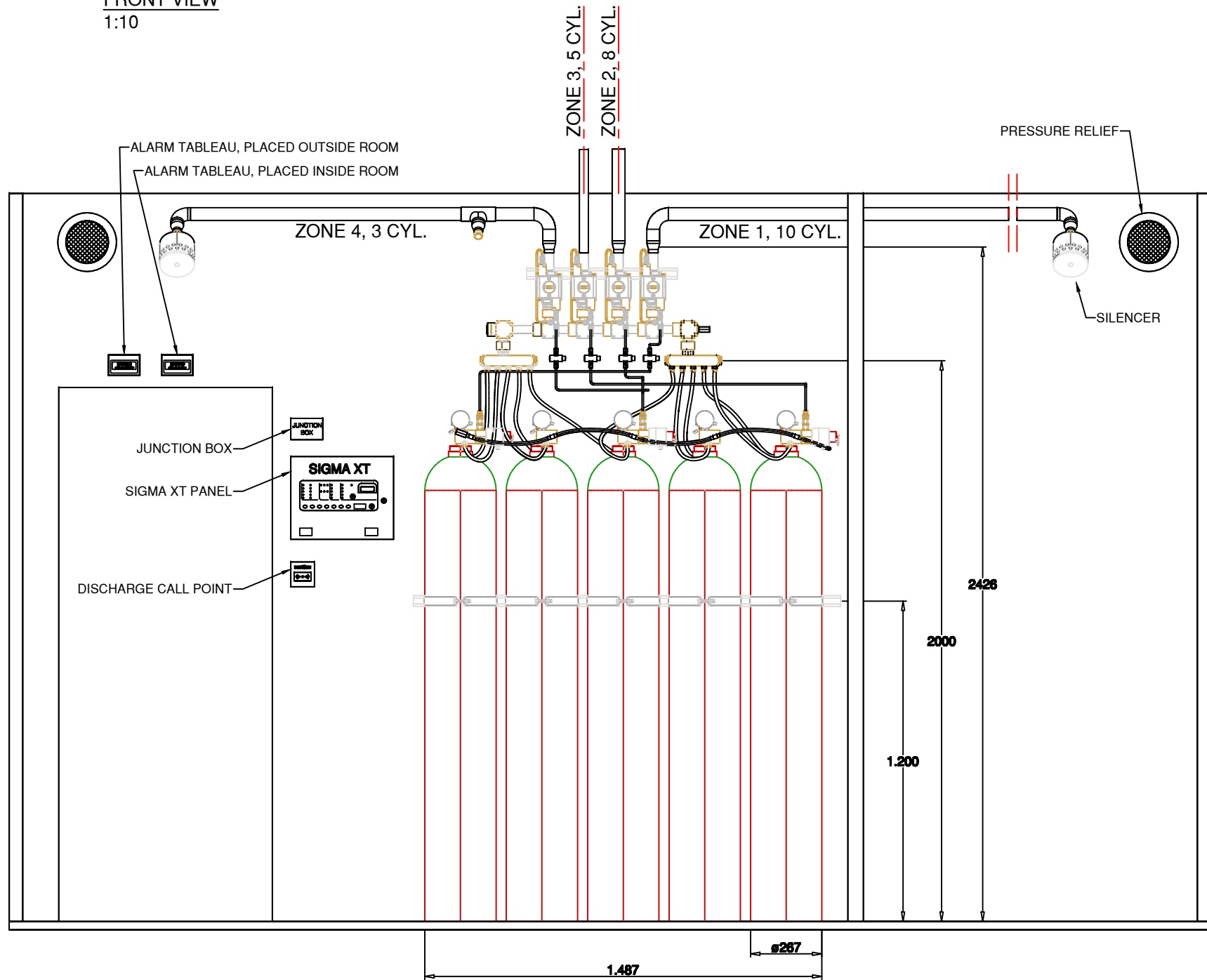
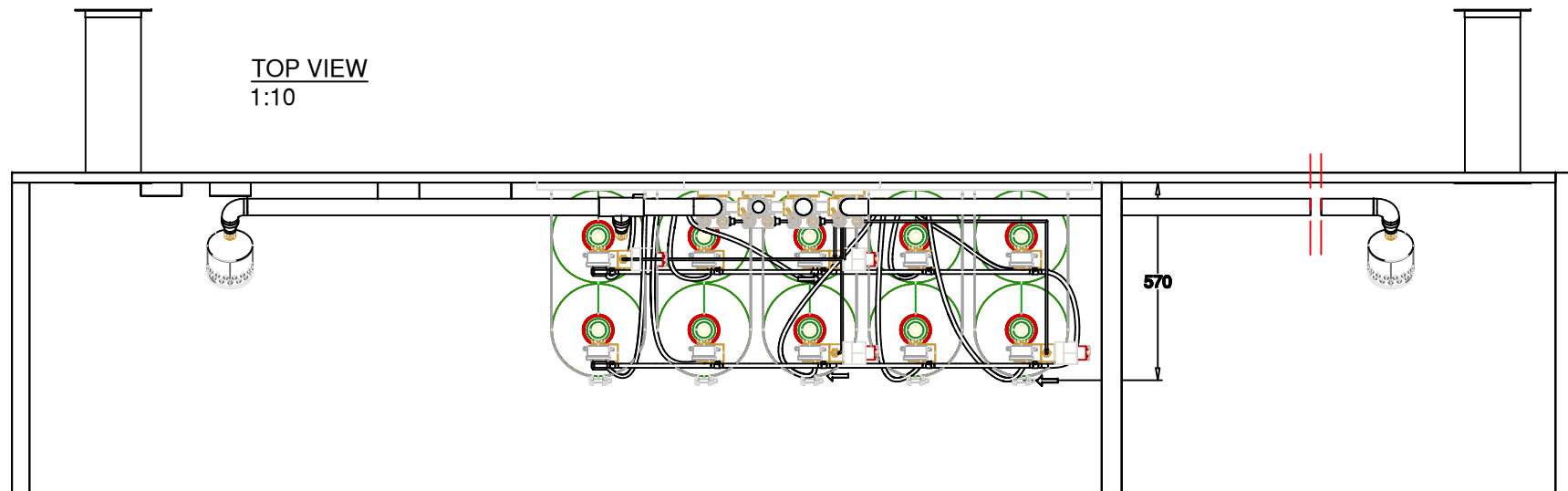


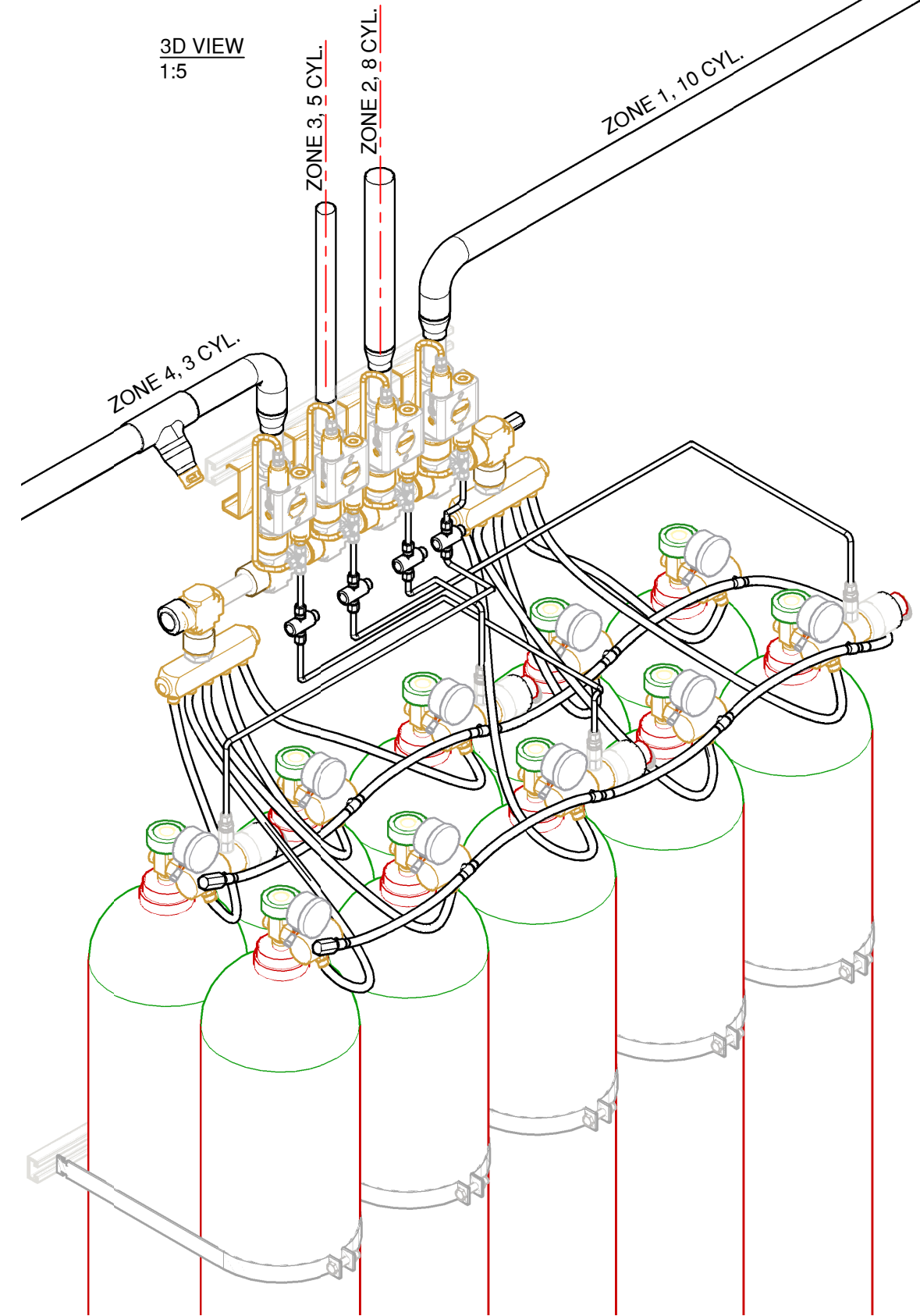
FRONT VIEW
1:10




TOP VIEW
1:10

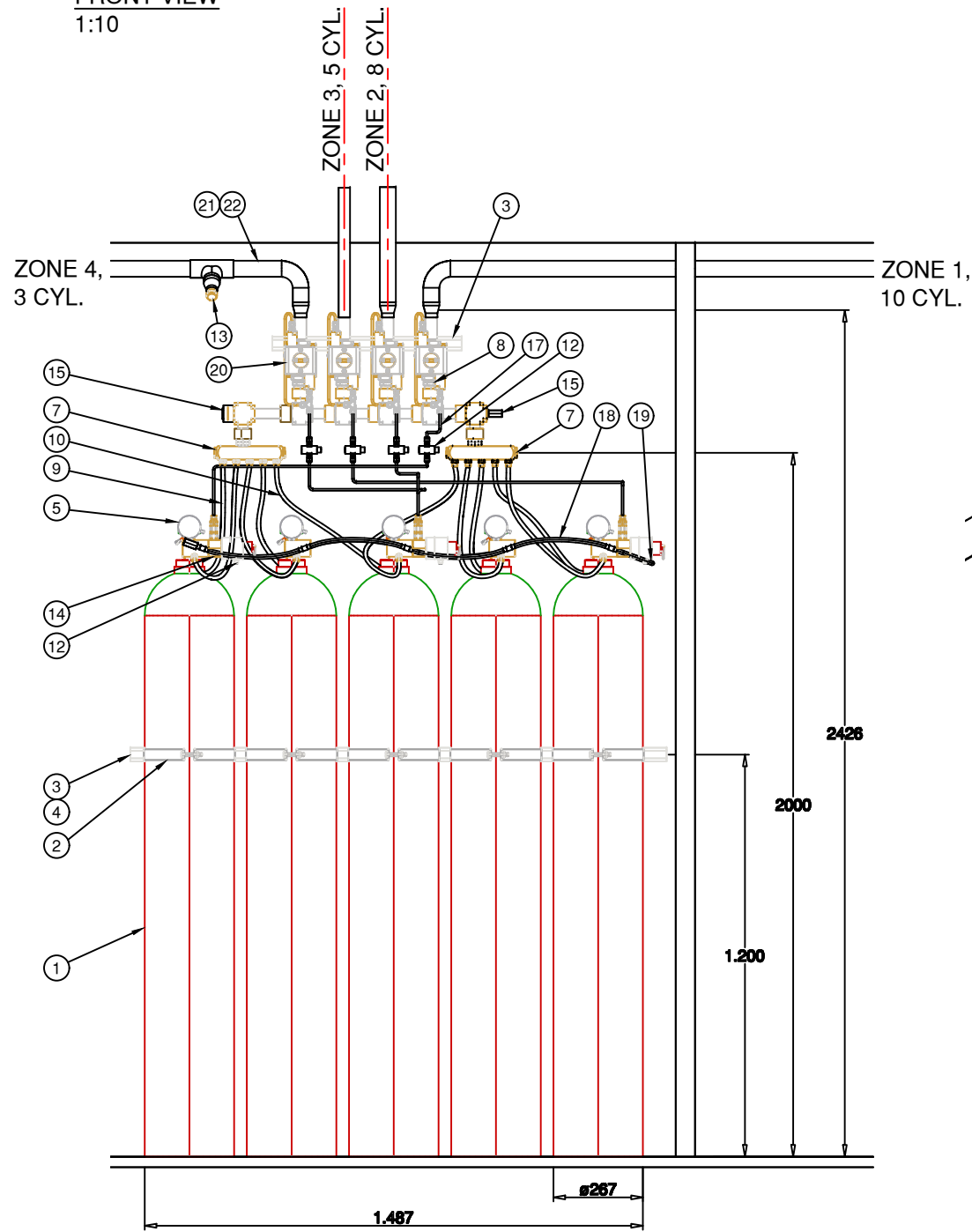


3D VIEW
1:5

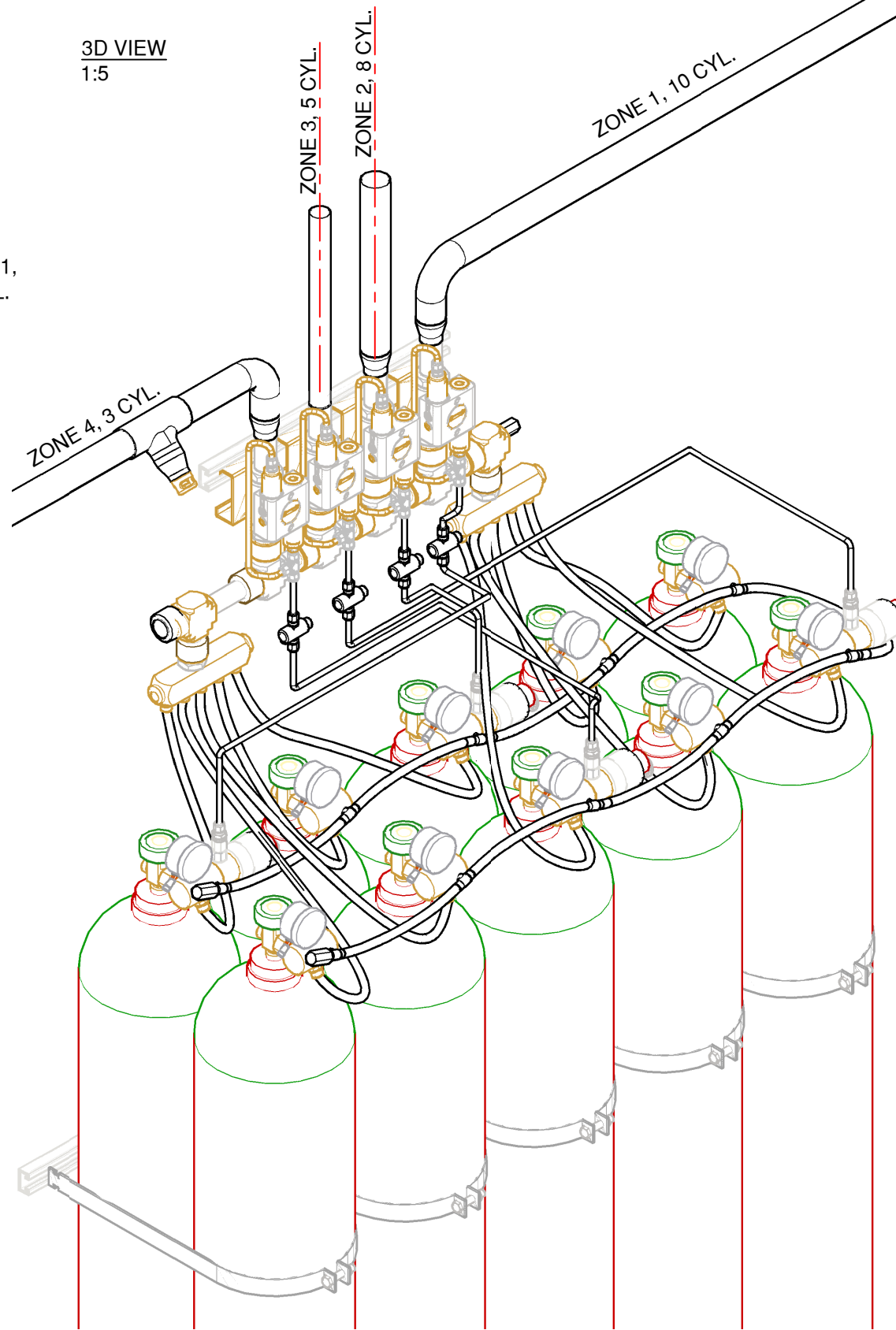


2	05.10.23	HEIGHT TO MANIFOLD CHANGED	JEMOL	LS
1	22.04.22	FIRST ISSUE	JEMOL	LS
Rev.	Date	Description	Sign.	Approved
Location			System	
Address			INERGEN SYSTEM DISTRIBUTION 10 CYLINDER, 4 ZONES ASSEMBLY DRAWING, OVERVIEW	
Project			Comments	
 Valundsvej 17 DK 3400 Hillerød Tel: +45 7022 2769 info@fire-eater.dk			Drawing no. ASSEMBLY DIST. 10 CYL. 4 ZONES 001 Scale 1:10-1:5 File name	

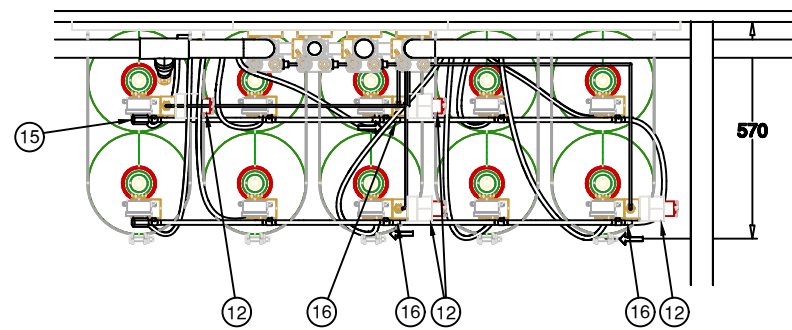
FRONT VIEW
1:10



3D VIEW
1:5



TOP VIEW
1:10



22	-	PIPE BRACKETS	
21	-	PIPES AND FITTINGS	
20	4	CV22 ZONEKIT ISO 1"	305170-8
19	1	SV-CI NEXT KIT 0,7m ELBOW	305180
18	4	SV-CI NEXT KIT	305197
17	-	ø6 PIPE + PIPE BRACKETS ø6	1021012/21
16	3	NON-RETURN VALVE, INCL. 305182 (POS. 14)	305440
15	1	SV22 ENDPLUG KIT	305164
14	4	SV CIV START KIT (VALVE+HOSE+NON RETURN)	305182
13	-	NOZZLE, 1/2"+3/4"+1"+1 1/4"	210404/6/8/10
12	4	SV TEST PORT KIT	305183
11	4	CI IS8B SOLENOID AND MANUEL	305451
10	4	HOSE DN10-400, 1,0m	303104
9	6	HOSE DN10-400, 1,5m	303106
8	4	SV22 ADAPTOR 1" ORIFICE	305234-8
7	2	SV22 MT5 MANIFOLD KIT	305175
6	10	CABEL FOR MANOSWICHT	303020
5	10	CI IV8-300 MANOSWICHT	305410
4	4	ENDCAP FOR CYLINDER RAIL	400121
3	2	CYLINDER RAIL FOR 5x80 L. 1600mm	400305
2	5	CYL. BRACKET SET FOR 80 L. CYL. IN 2 ROWS	400129
1	10	CYLINDER 80-300 BAR M25 EU	200624
POS.	QTY.	DESCRIPTION	ITEM NO.

2	05/10/23	HEIGHT TO MANIFOLD CHANGED	JEMOL	LS
1	22/04/22	FIRST ISSUE	JEMOL	LS
Rev.	Date	Description	Sign.	Approved
Location		System		
Address		INERGEN SYSTEM DISTRIBUTION 10 CYLINDER, 4 ZONES ASSEMBLY DRAWING		
Project		Comments		
Drawing no. ASSEMBLY DIST. 10 CYL. 4 ZONES 002		Scale 1:10-1:5 File name		